

More than just
a machine

Our brands

SENEBOGEN

KOBELCO

FINLAY

TEREX
RECYCLING
SYSTEMS

EVOQUIP
A TEREX BRAND

Husqvarna

Eggersmann
Recycling Technology

AGGREGCLAIM

ROKBAK

GENESIS

AMMANN

CDE

Prostack

HYDREMA

Thwaites

BERGMANN

CORMIDI

DAIMO

STEELWRIST

NPK

CR

ROTORAC
TRENK HANDLING EQUIPMENT

MB

Introduction

We have built our business around our customers' needs. Through our specialist divisions and network of locations, Molson Group provides an end-to-end solution to customers' equipment needs, new and used, wherever they are. This includes servicing their equipment via our team of fully trained and well-equipped engineers, maximising its lifetime and optimising its utilisation.

As a business, we strive to continually reduce our own environmental impact, but our greatest opportunity to make a significant difference is by placing environmental considerations at the forefront of our provision to customers and contributing to the transformation of the sectors we serve.

We use our knowledge, expertise and market insight to give best advice on how to plan for an efficient future, by investing in the right machines, now and in the years ahead. Through our relationships with leaders in the industry, we are fully informed of the latest and upcoming developments in both electric and hydrogen engine technology, staying ahead of the curve, and sharing our knowledge with customers.

Robin Powell
Group CEO



Equipment solutions across industries

At Molson we provide material handling and processing machinery solutions to a wide range of industries and sectors.

Through dedicated divisions we focus the knowledge and experience of our team, allowing us to deliver the right solution for our customers to meet their needs.



Waste & Recycling



Construction



Demolition



Infrastructure



Aggregates



Aggregate Washing



Ports



Forestry

Our *social channels*



Excavators



KOBELCO

Kobelco has always been a pioneer. In 1930, as a division of Kobe Steel Ltd. they produced the first piece of construction machinery to be manufactured in Japan: the 50K electric mining shovel. Since then they have shaped our future with an indomitable spirit, developing many innovative construction machinery products.

To ensure a rapid response to changing needs, Kobelco Construction Machinery Co. Ltd. became an independent subsidiary of Kobe Steel in 1999. Operating independently, they will continue to serve their clients as a full-service company specialising in construction machinery. As a member of the KOBELCO Group, they are committed to providing the high-quality products and excellent service our customers have come to expect from KOBELCO, with closer ties than ever to dealers and customers throughout the world.

Mini & Midi Excavators



KOBELCO
Mini Excavator

SK08-1E

Operating Weight
1,035 Kg

Power Output
Yanmar 2TE



KOBELCO
Mini Excavator

SK10SR-2E

Operating Weight
1,065 Kg

Power Output
Yanmar 2TN



KOBELCO
Mini Excavator

SK17SR-3E

Operating Weight
1,660 Kg

Power Output
Yanmar 3TN



KOBELCO
Mini Excavator

SK26SR-7

Operating Weight
2,500 - 2,650 Kg

Power Output
Yanmar 3TN



KOBELCO
Mini Excavator

SK28SR-7

Operating Weight
2,980 - 3,140 Kg

Power Output
Yanmar 3TN



KOBELCO
Mini Excavator

SK34SR-7

Operating Weight
3,660 Kg

Power Output
Yanmar 3TN



KOBELCO
Mini Excavator

SK39SR-7

Operating Weight
4,060 Kg

Power Output
Yanmar 3TN



KOBELCO
Mini Excavator

SK50SRX-7

Operating Weight
5,230 Kg

Power Output
Yanmar 4TN



KOBELCO
Mini Excavator

SK58SRX-7

Operating Weight
5,702 Kg

Power Output
Yanmar 4TN



KOBELCO
Midi Excavator

SK75SR-7

Operating Weight
7,800 - 8,950 Kg

Power Output
Yanmar 4TN

Crawler Excavators



KOBELCO
Midi Excavator

SK85MSR-7

Operating Weight
8,900 Kg

Power Output
Yanmar 4TN



KOBELCO
Crawler Excavator

SK130LC - 11

Operating Weight
15,200 Kg

Power Output
Isuzu 4JJ1X



KOBELCO
Crawler Excavator

SK140SRLC-7

Operating Weight
15,300 Kg

Power Output
Isuzu 4JJ1X



KOBELCO
Crawler Excavator

ED160-7
Blade Runner

Operating Weight
16,300 Kg

Power Output
Isuzu 4JJ1X



KOBELCO
Crawler Excavator

SK165SRLC-7

Operating Weight
18,100 Kg

Power Output
Isuzu 4JJ1X



KOBELCO
Crawler Excavator

SK180LC-11E

Operating Weight
21,000 Kg

Power Output
Yanmar 4TN



KOBELCO
Crawler Excavator

SK210LC-11E

Operating Weight
23,600 Kg

Power Output
Yanmar 4TN



KOBELCO
Crawler Excavator

SK230SRLC-7

Operating Weight
27,000 Kg

Power Output
Yanmar 4TN



KOBELCO
Crawler Excavator

SK260LC-11E

Operating Weight
27,700 Kg

Power Output
Yanmar 4TN



KOBELCO
Crawler Excavator

SK270SRLC-7

Operating Weight
28,100 Kg

Power Output
Yanmar 4TN

Crawler Excavators & Dismantlers



KOBELCO
Crawler Excavator

SK300LC-11E

Operating Weight
32,800 Kg

Power Output
Yanmar 4TN



KOBELCO
Crawler Excavator

SK350LC-11E

Operating Weight
37,000 Kg

Power Output
Isuzu 6HK1



KOBELCO
Crawler Excavator

SK380SRLC-7

Operating Weight
37,000 Kg

Power Output
Isuzu 6HK1



KOBELCO
Crawler Excavator

SK520LC-11E

Operating Weight
52,900 - 57,200 Kg

Power Output
Isuzu 6WG1



KOBELCO
Crawler Excavator

SK850LC-10E

Operating Weight
80,900 Kg

Power Output
Hino E13CYM



KOBELCO
Dismantler

SK140SRD-7

Operating Weight
20,500 Kg

Power Output
Isuzu 4JJ1X



KOBELCO
Dismantler

SK210D-11E

Operating Weight
30,500 Kg

Power Output
Yanmar 4TN

Demolition Excavators



KOBELCO
Demolition
Excavator

SK140DSRLC-7

Operating Weight
15,000 - 18,000 Kg

Power Output
86 kW



KOBELCO
Straight Boom
Excavator

SK300LC-11E

Operating Weight
32,800 Kg

Power Output
210 kW



KOBELCO
Demolition
Excavator

SK350DLC-11

Operating Weight
45,000 Kg

Power Output
210 kW



KOBELCO
Demolition
Excavator

SK400DLC-11E

Operating Weight
49,900 - 50,300 Kg

Power Output
210 kW



KOBELCO
Demolition
Excavator

SK550DLC-11

Operating Weight
63,500 - 65,500 Kg

Power Output
300 kW



KOBELCO
Demolition Excavator

SK1300DLC-10E

Operating Weight
136,900 Kg

Power Output
380 kW



Visit our website
to find out more

ADT's



ROKBAK

At Rokbak, there's one thing they value more than anything else. Reliability. They've built their whole business on it. From brutal heat to biting cold, their dump trucks are trusted to perform in the toughest conditions around the world.

And their global team are trusted to do the same – building the best machines and giving you rock solid support, wherever you are, whatever you need.

Articulated Dump Trucks



ROKBAK Articulated Dump Trucks

RA30

Payload
28 t

Power Output
276 kW / 360 hp



ROKBAK Articulated Dump Trucks

RA40

Payload
38 t

Power Output
331 kW / 444 hp

Site Dumpers



Thwaites

Since 1937 Thwaites have engineered solutions for the plant hire and construction markets in over 70 countries. Built to be the best, Thwaites offer a range of market leading site dumpers from 1 tonne to 9 tonne.

The latest machines demonstrate a further commitment to safety and sustainability, with the introduction of the innovative 6-ton ROPS machine and two brand-new, 3-tonne and 2-tonne fully electric dumpers.

Built to last, when you choose Thwaites, you are safe, compliant, competitive, and part of an 80-year heritage of owners and operators who love their Thwaites dumper.

Site Dumpers



THWAITES
Dumper

1 t

Payload
1,000 Kg

Tip Type
Hi Tip / Power Swivel



THWAITES
Dumper

1.5 t

Payload
1,500 Kg

Tip Type
Power Swivel



THWAITES
Dumper

2 t

Payload
2,000 Kg

Tip Type
Hi Tip / Power Swivel / Front Tip



THWAITES
Dumper

2 t Electric

Operating Weight
2,000 Kg

Tip Type
Hi-Swivel



THWAITES
Dumper

2.3 t

Payload
2,300 Kg

Tip Type
Power Swivel



THWAITES
Dumper

3 t

Payload
3,000 Kg

Tip Type
Fwd Tip / Power Swivel



THWAITES
Dumper

3 t Electric

Payload
3,000 Kg

Tip Type
Power Swivel



THWAITES
Dumper

T350

Payload
3,500 Kg

Tip Type
Power Swivel



THWAITES
Dumper

T450

Payload
4,500 Kg

Tip Type
Power Swivel



THWAITES
Dumper

6 t ROPS+

Payload
6,000 Kg

Tip Type
Power Swivel / Front Tip / Cabbed



THWAITES
Dumper

9 t

Payload
9,000 Kg

Tip Type
Front Tip

LGP Articulated Dump Trucks



HYDREMA

Hydrema puts its heart and soul into the construction of every machine. This level of commitment is necessary in order to produce world class machines that are the finest earthmovers on the market.

HYDREMA UK is part of a modern international group of companies which develops, manufactures and markets high-technology articulated dump trucks, loader excavators, compact wheeled excavators and specialist military equipment including mine clearing vehicles. The main factory and head office are located in Støvring near Aalborg in the north of Denmark.



HYDREMA
LGP Dump Trucks

DT6 ELECTRIC

Payload
5,500 Kg

Power Output
69 kW



HYDREMA
LGP Dump Trucks

707G SERIES

Payload
6,500 Kg

Power Output
75 - 122 Hp



HYDREMA
LGP Dump Trucks

912G SERIES

Payload
10,000 Kg

Power Output
147 Hp



HYDREMA
LGP Dump Trucks

920G

Payload
18,000 Kg

Power Output
314 Hp



HYDREMA
LGP Dump Trucks

922G SERIES

Payload
20,000 Kg

Power Output
314 Hp



Visit our website
to find out more



LGP Dumpers



BERGMANN

Bergmann are renowned for making industry leading wheeled and tracked dump trucks. Molson Compact Equipment are delighted to now offer these industry leading, quality dumpers. Built from conviction. For performance, for efficiency, for comfort, for safety.

With high transport capacity, fantastic driving comfort on all terrains and maximum operational safety. These dumpers fit all manner of applications, such as; mining, road building, pipeline laying and sports ground construction.



BERGMANN
LGP Dumpers

C815S Rear Tip

Maximum Speed
40 km/h

Power Output
119 kW



BERGMANN
LGP Dumpers

C815S Swivel Tip

Maximum Speed
40 km/h

Power Output
119 kW



BERGMANN
LGP Dumpers

C912S Rear Tip

Maximum Speed
15 km/h

Power Output
180 kW



BERGMANN
LGP Dumpers

C912S Swivel Tip

Maximum Speed
15 km/h

Power Output
180 kW



BERGMANN
LGP Dumpers

C828S

Maximum Payload
25,000 Kg

Power Output
194 kW



Visit our website
to find out more



Compaction



AMMANN

The full range of heavy rollers down to vibrating plates – they have the broadest range of compaction equipment in the market, and offer the high quality you would expect from a Swiss company still owned and run by the founder's family.

The company was founded by Jakob Ammann in 1869. In 1911 the first Ammann motorised road roller was developed and the start of the complete line of compaction products available today.

Through constant innovation and acquisition of complementary compaction manufacturers, the Ammann range now spans from 29 kg Rammers to Articulated Tandem Rollers. Having produced its first dual tandem vibratory roller in 1964 in Langenthal, Switzerland the takeover of Duomat complemented the range. The factory in Hennef, Germany now produces Rammers, both forward and reverse Vibratory Plates and Walk-behind Rollers.



Ammann Rammers

| Model | Operating Weight | Power Output | Foot Width |
|---------|------------------|----------------------|--------------|
| ATR 30 | 29 Kg | HONDA GX 35 | 80 or 130 mm |
| ATR 60P | 62 Kg | HONDA GXR 120 | 280 mm |
| ATR 60C | 62 Kg | HONDA GX 100 | 280 mm |
| ATR 68C | 68 Kg | HONDA GX 100 | 280 mm |
| ATR 68P | 68 Kg | HONDA GXR 120 | 280 mm |
| ACR 70D | 83 Kg | Yanmar L48 AE Diesel | 280 mm |



Ammann Walk Behind

| Model | Operating Weight | Power Output |
|----------|------------------|---------------------|
| ARW 65 | 712 Kg | Yanmar L100V Diesel |
| | 719 Kg | Hatz 1D42 Diesel |
| ARW 65-S | 812 Kg | Hatz |



Ammann Forward Plates

| Model | Operating Weight | Power Output |
|-----------|------------------|------------------|
| APF 10/33 | 54 Kg | HONDA GX 120 |
| APF 12/40 | 69 Kg | HONDA GX 120 |
| APF 15/40 | 80 Kg | HONDA GX 120 |
| APF 15/50 | 84 Kg | HONDA GX 120 |
| APF 20/50 | 88 Kg | HONDA GX 160 |
| APF 20/50 | 106 Kg | HATZ 1B20 Diesel |



Ammann Reversible Plates

| Model | Operating Weight | Power Output |
|-----------|------------------|------------------|
| APR 22/40 | 100 Kg | HONDA GX160 |
| APR 22/40 | 118 Kg | HATZ 1B20 Diesel |
| APR 25/40 | 135 Kg | HATZ 1B20 Diesel |
| APR 25/50 | 135 Kg | HATZ 1B20 Diesel |
| APR 30/50 | 199 Kg | HONDA GX270 |
| APR 30/50 | 215 Kg | HATZ 1B30 Diesel |
| APR 30/60 | 199 Kg | HONDA GX270 |
| APR 30/60 | 215 Kg | HATZ 1B30 Diesel |
| APR 40/60 | 263 Kg | HONDA GX270 |
| APR 40/60 | 269 Kg | HATZ 1B30 Diesel |
| APR 49/20 | 391Kg | HATZ 1B40 Diesel |
| APR 59/20 | 440 Kg | HATZ 1B40 Diesel |



Ammann Hydrostatic Plates

| Model | Operating Weight | Power Output |
|-------------|------------------|-------------------------|
| APH 50/75 | 350 Kg | Hatz Supra 1D50S Diesel |
| APH 55/75 | 362 Kg | Hatz Supra 1D50S Diesel |
| APH 60/85 | 464 Kg | Hatz Supra 1D81S Diesel |
| APH 65/85 | 471 Kg | Hatz 1D81S Diesel |
| APH 1000 TC | 715 Kg | Hatz 1D90V Diesel |
| APH 85/95 | 760 Kg | Kubota D902 Diesel |
| APH 110-95 | 778 Kg | Kubota D1105 Diesel |



Ammann Trench Rollers

| Model | Operating Weight | Width |
|-----------------|------------------|---------------------|
| ARR 1575 | 1395 Kg | 640 - 850 mm |



Ammann Single Drum Rollers

| Model | Operating Weight | Power Output |
|----------------|------------------|----------------------|
| ARS 30 | 3480 Kg | Kubota V2403 |
| ARS 50 | 4165 Kg | Kubota V2403 |
| ARS 70 | 6490 Kg | Kubota V3307 |
| ARS 110 | 10,860 Kg | Deutz TCD 3.6 |
| ARS 130 | 12,580 Kg | Deutz TCD 3.6 |
| ARS 150 | 14,840 Kg | Deutz TCD 4.1 |
| ARS 170 | 16,340 Kg | Deutz TCD 4.1 |
| ARS 200 | 19,750 Kg | Deutz TCD 6.1 |
| ARS 220 | 21,930 Kg | Deutz TCD 6.1 |



Ammann Pneumatic Tyre Roller

| Model | Operating Weight | Power Output |
|----------------|------------------|---------------------|
| ART 240 | 9980 Kg | Deutz TCD3.6 |



Ammann Light Tandem Rollers

| Model | Operating Weight | Stage | Power Output |
|------------|------------------|-------|--------------|
| ARX 12-2 | 1460 Kg | 5 | Kubota D1105 |
| ARX 16-2C | 1450 Kg | 5 | Kubota D1105 |
| ARX 16-2 | 1510 Kg | 5 | Kubota D1105 |
| ARX 20-2 | 1570 Kg | 5 | Kubota D1105 |
| ARX 23-2 | 2230 Kg | 5 | Kubota D1803 |
| ARX 26.1-2 | 2460 Kg | 5 | Kubota D1703 |
| ARX 36-2 | 3785 Kg | 5 | Kubota D1803 |
| ARX 40-2 | 4200 Kg | 5 | Kubota D1803 |
| ARX 45-2 | 4395 Kg | 5 | Kubota D1803 |



Ammann Rigid Tandem Rollers

| Model | Operating Weight | Power Output |
|----------|------------------|---------------|
| ARP 75 | 7375 Kg | Kubota V3307 |
| ARP 75C | 7510 Kg | Kubota V3307 |
| ARP 95 | 9700 Kg | DEUTZ TCD 3.6 |
| ARP 95 C | 9250 Kg | DEUTZ TCD 3.6 |



Ammann Heavy Tandem Rollers

| Model | Operating Weight | Power Output |
|----------|------------------|---------------|
| ARX 90 | 9560 Kg | DEUTZ TCD 3.6 |
| ARX 90C | 9570 Kg | DEUTZ TCD 3.6 |
| ARX 110 | 10,400 Kg | DEUTZ TCD 3.6 |
| ARX 110C | 10,340 Kg | DEUTZ TCD 3.6 |
| ARX 140 | 13,300 Kg | Perkins 904J |
| ARX 160 | 14,000 Kg | Perkins 904J |

Tracked Dumpers



CORMIDI

Cormidi are experts in the manufacture of mini tracked dumpers. They're an established business with a prominent presence in all markets worldwide.

The Cormidi products are specifically built as tracked carriers, therefore giving them many advantages over competing machines. Making these models very popular throughout the UK and Ireland in hire fleets and on all manner of jobsites.

"Leading Innovation", the slogan adopted by Cormidi sums up the company philosophy, which is to penetrate the market with innovative products and solutions.

Tracked Dumpers



CORMIDI
Tracked Dumper

C55HI

Operating Weight
547 Kg

Tip Height
1540 mm

Power Output
Honda GX200



CORMIDI
Tracked Dumper

C60HI

Operating Weight
567 Kg

Tip Height
1675 mm

Power Output
Yanmar LA 70



CORMIDI
Tracked Dumper

C85HI (C10.85)

Operating Weight
800 Kg

Tip Height
1500 mm

Power Output
Yanmar LA 70



CORMIDI
Tracked Dumper

C85RIX (swivel)

Operating Weight
800 Kg

Tip Height
1500 mm

Power Output
Yanmar Diesel



CORMIDI
Tracked Dumper

C85 HIACW

Operating Weight
800 Kg

Capacity
800 Kg

Power Output
Yanmar Diesel
HI tip self loading



CORMIDI
Tracked Dumper

C1200

Operating Weight
795 Kg

Capacity
1200 Kg

Power Output
Kubota D1105



Visit our website
to find out more

Remote Demolition Robots



With over 325 years of innovation and passion, Husqvarna provides construction professionals with a wide range of products, services and solutions to the Construction industry.

Husqvarna DXR demolition robots give you much more power and control like never before, providing you with solutions that let you get demolition work done faster and smarter. The long distance remote connection (up to 300m) keeps you safer and clear of potential risks, also enabling work in challenging areas.

Remote Controlled Demolition Robots



Husqvarna DXR 95

| Machine Specifications | |
|--------------------------------|----------------------|
| Reach (up/forward) | 3.16 / 2.67 m |
| Weight | 589 kg |
| Power Output | 9.8 kW |
| Hydraulic oil flow | 32 l/min |
| System pressure increased max | 250 Bar |
| Range of wireless transmission | Up to 300 m |
| Minimum generator requirement | 45 Kva |



Husqvarna DXR 145

| Machine Specifications | |
|--------------------------------|--------------------|
| Reach (up/forward) | 4.4 / 3.7 m |
| Weight | 985 kg |
| Power Output | 18.5 kW |
| Hydraulic oil flow | 52 l/min |
| System pressure increased max | 250 Bar |
| Range of wireless transmission | Up to 300 m |
| Minimum generator requirement | 45 Kva |



Husqvarna DXR 275

| Machine Specifications | |
|--------------------------------|--------------------|
| Reach (up/forward) | 4.8 / 4.5 m |
| Weight | 1750 kg |
| Power Output | 24 kW |
| Hydraulic oil flow | 75 l/min |
| System pressure increased max | 250 Bar |
| Range of wireless transmission | Up to 300 m |
| Minimum generator requirement | 57 Kva |



Husqvarna DXR 305

| Machine Specifications | |
|--------------------------------|--------------------|
| Reach (up/forward) | 5.2 / 4.9 m |
| Weight | 1960 kg |
| Power Output | 27 kW |
| Hydraulic oil flow | 85 l/min |
| System pressure increased max | 250 Bar |
| Range of wireless transmission | Up to 300 m |
| Minimum generator requirement | 66 Kva |



Husqvarna DXR 315

| Machine Specifications | |
|--------------------------------|--------------------|
| Reach (up/forward) | 5.5 / 5.2 m |
| Weight | 2020 kg |
| Power Output | 27 kW |
| Hydraulic oil flow | 85 l/min |
| System pressure increased max | 250 Bar |
| Range of wireless transmission | Up to 300 m |
| Minimum generator requirement | 66 Kva |

Attachments



STEELWRIST

The core of the Steelwrist product offering includes quick couplers, tilt couplers and tiltrotators that together with the control system make up the foundation for higher excavator efficiency.

A determined focus on robust and modern products, combined with fast service has been appreciated by an increasing number of customers.



STEELWRIST Tiltrotator

XTR2

Machine Weight
0 - 2 t

Machine Interface
S30



STEELWRIST Tiltrotator

X04

Machine Weight
2 - 4 t

Machine Interface
S40



STEELWRIST Tiltrotator

X07

Machine Weight
5 - 7 t

Machine Interface
S40 - S45 - S50



STEELWRIST Tiltrotator

X12

Machine Weight
7 - 12 t

Machine Interface
S45 - S50 - SQ50



STEELWRIST Tiltrotator

X14

Machine Weight
10 - 14 t

Machine Interface
S45 - S50 - SQ50



STEELWRIST Tiltrotator

XTR15

Machine Weight
12 - 16 t

Machine Interface
S60 - SQ60

STEELWRIST Tiltrotator



X18

Operating Weight
12 - 16 t

Machine Interface
**S60 - SQ60-4
SQ60-5**

STEELWRIST Tiltrotator



XTR20

Operating Weight
15 - 20 t

Machine Interface
S60 - SQ60



STEELWRIST Tiltrotator

X20

Operating Weight
16 - 22 t

Machine Interface
**S60 - SQ60-5
- SQ65**

STEELWRIST Tiltrotator



XTR23

Operating Weight
19 - 23 t

Machine Interface
**SQ65 - S70 -
SQ70/55**

STEELWRIST Tiltrotator



X26

Operating Weight
18 - 26 t

Machine Interface
S70 - SQ70/55



STEELWRIST Tiltrotator

X32

Operating Weight
25 - 33 t

Machine Interface
**S70 - SQ70/55 -
S80 - SQ80**



SQ Adaptor Plates

| Model | Excavator Weight |
|--|------------------|
| SQ50 Adaptor Plate with manifold | 5 - 13 t |
| SQ50 Adaptor Plate with internal hoses | 5 - 13 t |
| SQ60-5 Adaptor plate with manifold | 12 - 20 t |
| SQ60-4 Adaptor plate with manifold | 12 - 20 t |
| SQ60-4 Adaptor plate for internal hoses | 12 - 20 t |
| SQ60-5 Adaptor plate for internal hoses | 12 - 20 t |
| SQ70 Adaptor plate with manifold | 18 - 32 t |
| SQ70 Adaptor plate for internal hoses | 18 - 32 t |
| SQ80 Adaptor Plate for internal hoses | 28 - 40 t |
| SQ80 Adaptor Plate with manifold | 28 - 40 t |
| SQ90 Adaptor plate for internal hoses | 40 - 70 t |
| SQ90 Adaptor Plate with manifold | 40 - 70 t |

Weld On SQ-Adaptors

| Model | Excavator Weight |
|----------------------|------------------|
| SQ50 - low | 5 - 13 t |
| SQ60-4 - low | 12 - 20 t |
| SQ60-4 - high | 12 - 20 t |
| SQ60-5 - low | 12 - 20 t |
| SQ60-5 - high | 12 - 20 t |
| SQ70 - low | 18 - 32 t |
| SQ70 - high | 18 - 32 t |
| SQ80 - low | 28 - 40 t |
| SQ80 - high | 28 - 40 t |
| SQ90 - low | 40 - 70 t |
| SQ90 - high | 40 - 70 t |

Weld On S-Adaptors

| Model | Excavator Weight |
|----------------|------------------|
| S30/150 | 0 - 2 t |
| S30/180 | 2 - 3 t |
| S40 | 2 - 6 t |
| S50 | 5 - 12 t |
| S45 | 5 - 12 t |
| S60 | 12 - 20 t |
| S70 | 18 - 32 t |
| S80 | 25 - 43 t |



SQ Pendulum Adaptors

| Model | Excavator Weight |
|----------------|------------------|
| SQ50 | 5 - 13 t |
| SQ60-5 | 12 - 20 t |
| SQ65 | 15 - 22 t |
| SQ70 | 18 - 33 t |
| SQ70/55 | 18 - 33 t |



Tilt Couplers

| Model | Quick Couplers | Excavator Weight | Weight from |
|-------|----------------|------------------|-------------|
| TCX | S30 | 0 - 2 t | 28 Kg |
| XT4 | S40 | 2 - 6 t | 95 Kg |
| XT7 | S40 | 2 - 6 t | 145 Kg |
| XT7 | S50 | 5 - 7 t | 190 Kg |
| XT10 | S45 | 5 - 12 t | 210 Kg |
| XT10 | S50 | 5 - 12 t | 210 Kg |
| XT10 | SQ50 | 5 - 12 t | 210 Kg |
| XT20 | S60 | 12 - 20 t | 360 Kg |
| XT20 | SQ60 | 12 - 20 t | 380 Kg |
| XT23 | S70 | 18 - 24 t | 620 Kg |
| XT23 | SQ70 | 18 - 24 t | 650 Kg |

Rotor Couplers

| Model | Quick Couplers | Excavator Weight | Weight from |
|-------|----------------|------------------|-------------|
| XR7 | S40 | 4 - 7 t | 130 Kg |
| XR7 | SQ40 | 4 - 7 t | 140 Kg |
| XR20 | S60 | 12 - 20 t | 490 Kg |
| XR20 | SQ60 | 12 - 20 t | 490 Kg |

Quick Couplers

| Model | Excavator Weight | Building Height |
|---------|------------------|-----------------|
| S30 | 0 - 2 t | 82 mm |
| S40 | 2 - 6 t | 110 mm |
| S45 | 5 - 12 t | 120 mm |
| S50 | 5 - 12 t | 130 mm |
| S60 | 12 - 20 t | 150 mm |
| S70 | 18 - 32 t | 200 mm |
| S80 | 25 - 43 t | 230 mm |
| S90 | 40 - 70 t | 265 mm |
| SQ50 | 5 - 12 t | 130 mm |
| SQ60-4 | 12 - 20 t | 150 mm |
| SQ60-5 | 12 - 20 t | 150 mm |
| SQ65 | 14 - 22 t | 160 mm |
| SQ70 | 18 - 32 t | 200 mm |
| SQ70/55 | 18 - 32 t | 210 mm |
| SQ80 | 25 - 43 t | 230 mm |
| SQ90 | 40 - 70 t | 265 mm |



Visit our website
to find out more

Powered Work Tools



Sorting Grapples

| Model | Machine Weight | Gripper Reach |
|-------|----------------|---------------|
| SGX6 | 3 - 7 t | 1646 mm |
| SGX8 | 6 - 8 t | 1646 mm |
| SGX14 | 6 - 14 t | 1839 mm |
| SGX20 | 12 - 20 t | 2084 mm |
| SGX26 | 18 - 26 t | 2281 mm |



Multi Grapples

| Model | Machine Weight | Gripper Reach |
|-------|----------------|---------------|
| MGX2 | 0 - 2 t | 1066 mm |
| MGX4 | 6 - 8 t | 1304 mm |
| MGX6 | 6 - 14 t | 1437 mm |
| MGX8 | 12 - 20 t | 1439 mm |
| MGX14 | 18 - 26 t | 1609 mm |
| MGX20 | 12 - 20 t | 1819 mm |
| MGX26 | 18 - 26 t | 2028 mm |



Finger Grapples

| Model | Machine Weight | Gripper Reach |
|-------|----------------|---------------|
| FGX6 | 4 - 7 t | 1451 mm |
| FGX8 | 6 - 8 t | 1451 mm |
| FGX14 | 6 - 14 t | 1632 mm |
| FGX20 | 12 - 20 t | 1830 mm |
| FGX26 | 18 - 26 t | 2026 mm |



Tree Shears

| Model | Machine Weight | Gripper Reach | Weight from |
|-------|----------------|---------------|-------------|
| TSX6 | 4 - 7 t | 654 mm | 185 Kg |



Compactors

| Model | Machine Weight | Compaction Force |
|-------|----------------|------------------|
| HGX6 | 2 - 6 t | 25 kN |
| HGX8 | 2 - 8 t | 25 kN |
| HGX12 | 8 - 12 t | 50 kN |
| HGX14 | 12 - 14 t | 50 kN |
| HGX20 | 14 - 20 t | 70 kN |
| HGX26 | 20 - 26 t | 70 kN |



Hydraulic Pallet Fork

| Model | Machine Weight | Fork Dimensions |
|-------|----------------|-----------------|
| HPF | 10 - 33 t | 125x50x1200 mm |



Sweepers

| Model | Machine Weight | Weight |
|--------|----------------|--------|
| SW1000 | 5 - 33 t | 230 Kg |
| SW1500 | 5 - 33 t | 280 Kg |
| SW2000 | 5 - 33 t | 350 Kg |



Grading Beams

| Model | Machine Weight | Weight from |
|--------|----------------|-------------|
| GR1250 | 2 - 6 t | 210 Kg |
| GR1500 | 2 - 6 t | 400 Kg |
| GR2000 | 6 - 14 t | 480 Kg |
| GR2500 | 6 - 22 t | 560 Kg |
| GR3000 | 14 - 33 t | 640 Kg |



Ripper

| Model | Machine Weight | Weight from |
|-------|----------------|-------------|
| RP30 | 0 - 2 t | 30 Kg |
| RP40 | 2 - 6 t | 100 Kg |
| RP45 | 6 - 13 t | 190 Kg |
| RP50 | 6 - 13 t | 190 Kg |
| RP60 | 13 - 18 t | 340 Kg |
| RP70 | 18 - 33 t | 640 Kg |



Pallet Forks

| Model | Machine Weight | Weight from |
|-------|----------------|-------------|
| PF40 | 2 - 6 t | 170 Kg |
| PF45 | 5 - 14 t | 200 Kg |
| PF50 | 5 - 14 t | 200 Kg |
| PF60 | 12 - 20 t | 340 Kg |
| PF70 | 18 - 33 t | 410 Kg |



Asphalt Cutter

| Model | Machine Weight | Weight from |
|-------|----------------|-------------|
| AC5 | 2 - 6 t | 50 Kg |
| AC10 | 6 - 13 t | 70 Kg |
| AC10 | 6 - 13 t | 80 Kg |
| AC15 | 13 - 18 t | 100 Kg |
| AC20 | 18 - 33 t | 160 Kg |



Fixed Brush

| Model | Machine Weight | Weight from |
|--------|----------------|-------------|
| FB1800 | 2 - 20 t | 230 Kg |
| FB2500 | 2 - 20 t | 280 Kg |



Visit our website
to find out more



Attachments



DAEMO

Established in 1989, DAEMO has focused on attachments manufacturing, which resulted in becoming a world leader in attachments.

They provide the highest performing attachments to quarries, mines, construction sites, recycling industries, and public works across the globe.

An unwavering commitment to research and uncompromising quality control practices, have produced products that bring the highest satisfaction to customers.



DAEMO Breakers

| Model | Excavator Weight | Weight |
|-------|------------------|---------|
| B06 | 0.7 - 1.6 t | 65 Kg |
| B10 | 1.2 - 2.0 t | 115 Kg |
| B20 | 1.6 - 2.3 t | 150 Kg |
| B30 | 2 - 4 t | 180 Kg |
| B40 | 3 - 5.5 t | 224 Kg |
| B50 | 3.5 - 8 t | 333 Kg |
| B70 | 5 - 8 t | 431 Kg |
| B90 | 7 - 15 t | 614 Kg |
| B140 | 12 - 17 t | 929 Kg |
| B180 | 16 - 22 t | 1209 Kg |
| BN200 | 18 - 24 t | 1500 Kg |
| B210 | 18 - 27 t | 1738 Kg |
| B230 | 18 - 27 t | 1777 Kg |
| B250 | 23 - 30 t | 2165 Kg |
| B300 | 28 - 43 t | 2832 Kg |
| B360 | 30 - 43 t | 2937 Kg |
| B450 | 40 - 50 t | 3713 Kg |
| BN480 | 35 - 55 t | 3770 Kg |
| B650 | 42 - 81 t | 4380 Kg |
| B850 | 65 - 100 t | 5625 Kg |
| B1000 | 85 - 140 t | 8060 Kg |



DAEMO Fixed Or Rotating Crushers / Pulveriser

| Model | Excavator Weight | Weight |
|----------|------------------|---------|
| DMC10 | 1 - 2 t | 105 Kg |
| DMC20 | 2 - 4 t | 180 Kg |
| DMC30 | 4 - 6 t | 370 Kg |
| DMC51 | 4.5 - 7 t | 580 Kg |
| DMC81 | 5.5 - 12 t | 650 Kg |
| DMC140 B | 13 - 20 t | 1350 Kg |
| DMC180 B | 16 - 23 t | 1450 Kg |
| DMC210 B | 20 - 28 t | 1980 Kg |
| DMC300 B | 26 - 39 t | 2600 Kg |
| DFP300 | 27 - 39 t | 2620 Kg |
| DFP400 | 35 - 50 t | 3100 Kg |
| DRP50 | 6 - 12 t | 560 Kg |
| DRP105 | 10 - 16 t | 1000 Kg |
| DRP145 | 13 - 20 t | 1350 Kg |
| DRP185 | 19 - 25 t | 1850 Kg |
| DRP235 | 23 - 33 t | 2300 Kg |
| DRP335 | 32 - 45 t | 3250 Kg |
| DRP435 | 40 - 60 t | 4200 Kg |



DAEMO Shears

| Model | Excavator Weight | Weight |
|-------------------|------------------|---------|
| DMS20 | 1 - 3.5 t | 210 Kg |
| DMS30 | 3.5 - 6 t | 290 Kg |
| DMS50 | 5 - 12 t | 510 Kg |
| DMS S50 Long Body | 5 - 12 t | 520 Kg |
| DMS250 short body | 20 - 28 t | 2200 Kg |
| DMS300 short body | 27 - 33 t | 2920 Kg |
| DMS350 long body | 30 - 50 t | 3550 Kg |
| DMS480 long body | 30 - 43 t | 5450 Kg |
| DMS550X long body | 40 - 55 t | 6800 Kg |
| DMS700 long body | 53 - 75 t | 8100 Kg |

Attachments



DAEMO Multi Processors

| Model | Excavator Weight | Weight |
|---------|------------------|----------------|
| DMP 50 | 6 - 12 t | 580 - 620 Kg |
| DMP 140 | 13 - 22 t | 1350 - 1450 Kg |
| DMP 230 | 18 - 30 t | 1730 - 1810 Kg |
| DMP 330 | 29 - 43 t | 2910 - 3000 Kg |
| DMP 485 | 43 - 60 t | 4628 Kg |



DAEMO Orange Grapples

| Model | Excavator Weight | Weight |
|----------|------------------|---------|
| DMSG600 | 10 - 20 t | 900 Kg |
| DMSG800 | 18 - 25 t | 1200 Kg |
| DMSG1000 | 25 - 32 t | 1700 Kg |
| DMSG1300 | 32 - 50 t | 2200 Kg |



Daemo Compactors

| Model | Excavator Weight | Weight |
|--------|------------------|---------|
| DMV50 | 2 - 7 t | 342 Kg |
| DMV140 | 8 - 15 t | 624 Kg |
| DMV230 | 15 - 25 t | 850 Kg |
| DMV300 | 25 - 47 t | 1300 Kg |



DAEMO Car Dismantler - Rotating

| Model | Excavator Weight | Weight |
|----------|------------------|----------|
| DMCP140R | 13 - 20 t | 870 Kg |
| DMCP230R | 20 - 30 t | 1,800 Kg |



DAEMO Demolition Grabs

| Model | Excavator Weight | Weight |
|---------|------------------|---------|
| DMR100 | 2.5 - 6 t | 300 Kg |
| DMR160 | 4 - 8 t | 370 Kg |
| DMR300 | 7 - 13 t | 550 Kg |
| DMR600 | 13 - 21 t | 970 Kg |
| DMR800 | 19 - 30 t | 1450 Kg |
| DMR1000 | 26 - 43 t | 2200 Kg |



Daemo Eureka Pencil Breakers

| Model | Excavator Weight | Weight |
|-------|------------------|--------|
| E06 | 0.5 - 1.2 t | 58 Kg |
| E10 | 0.8 - 2.5 t | 77 Kg |
| E20 | 1.3 - 3 t | 97 Kg |
| E30 | 2.5 - 4.5 t | 141 Kg |
| E40 | 3 - 5.5 t | 175 Kg |

Attachments



NPK[®]

NPK of Japan is one of the world's largest manufacturers of boom mounted hydraulic equipment for all carriers.

NPK offer over 10 product groups, covering more than 50 models for demolition & construction industry.

Attachments



NPK Hydraulic Hammers

| Model | Excavator Weight | Weight |
|-------|------------------|---------|
| E-106 | 0.7 - 1.0 t | 62 Kg |
| PH-06 | 1.0 - 2.0 t | 94 Kg |
| PH-07 | 1.5 - 3.0 t | 112 Kg |
| PH-1 | 2.0 - 3.5 t | 162 Kg |
| PH-2 | 3.0 - 5.5 t | 200 Kg |
| PH-3 | 4 - 9 t | 314 Kg |
| PH-4 | 6 - 12 t | 465 Kg |
| GHD6 | 12 - 18 t | 865 Kg |
| GH-7A | 14 - 21 t | 1220 Kg |
| GH-9 | 17 - 24 t | 1482 Kg |
| GHD10 | 21 - 28 t | 1660 Kg |
| GH-12 | 24 - 38 t | 2085 Kg |
| GH-15 | 28 - 45 t | 2618 Kg |
| GH-18 | 38 - 50 t | 3067 Kg |
| GH-23 | 50 - 60 t | 4525 Kg |
| GH-30 | 50 - 80 t | 5450 Kg |
| GH-40 | 90 - 110 t | 7750 Kg |



NPK Demolition Grabs

| Model | Excavator Weight | Weight |
|--------|------------------|---------|
| DG-1 | 0.75 - 1.5 t | 75 Kg |
| DG-4 | 2.5 - 4 t | 172 Kg |
| DG-6 | 4 - 6 t | 290 Kg |
| DG-9 | 5 - 9 t | 450 Kg |
| DG-14 | 7 - 14 t | 642 Kg |
| DG-16 | 10 - 16 t | 875 Kg |
| DG-20A | 14 - 20 t | 1250 Kg |
| DG-22 | 14 - 20 t | 1255 Kg |
| SG-110 | 12 - 20 t | 1325 Kg |
| DG-25 | 16 - 26 t | 1450 Kg |
| DG-30A | 18 - 30 t | 1850 Kg |
| DG-40A | 25 - 40 t | 2050 Kg |
| DG-50 | 35 - 50 t | 2500 Kg |

NPK Multi-Processors

| Model | Excavator Weight | Weight |
|-------|------------------|---------|
| M-20K | 17 - 24 t | 2100 Kg |
| M-20S | 17 - 24 t | 2000 Kg |
| M-20G | 17 - 24 t | 2100 Kg |
| M-28K | 28 - 40 t | 3130 Kg |
| M-28S | 28 - 40 t | 2970 Kg |
| M-28G | 28 - 40 t | 3150 Kg |
| M-38K | 35 - 45 t | 4250 Kg |
| M-38S | 35 - 45 t | 3850 Kg |
| M-38G | 35 - 45 t | 4150 Kg |





NPK Concrete Crushers

| Model | Excavator Weight | Weight |
|----------|------------------|--------------|
| X-1 | 1.3 - 2.0 t | 130 Kg |
| X-3A / R | 2.5 - 4.0 t | 280 / 313 Kg |
| X-4A / R | 3.5 - 5.5 t | 350 / 375 Kg |
| X-7A / R | 6 - 9 t | 670 / 675 Kg |
| SV-7XR | 6 - 9 t | 745 Kg |
| SV140R | 10 - 16 t | 1450 Kg |
| S-13XCR | 10 - 15 t | 1485 Kg |
| S-16XCR | 14 - 18 t | 1820 Kg |
| S-23XCR | 19 - 21 t | 2370 Kg |
| SV250R | 19 - 28 t | 2470 Kg |
| S-24XCR | 19 - 27 t | 2550 Kg |
| S-36XCR | 29 - 38 t | 3800 Kg |
| SV380R | 29 - 38 t | 3800 Kg |
| SV400R | 29 - 38 t | 4100 Kg |
| S-42XCR | 39 - 48 t | 4550 Kg |
| SV500R | 39 - 48 t | 4960 Kg |
| SV700R | 60 - 100 t | 7440 Kg |
| SV-100XR | 80 - 100 t | 9200 Kg |



NPK Pulverisers

| Model | Excavator Weight | Weight |
|----------|------------------|----------------|
| V70R | 6 - 10 t | 780 Kg |
| G70/R | 6 - 10 t | 690 / 815 Kg |
| G120 | 10 - 17 t | 1165 Kg |
| V160R | 16 - 21 t | 1650 Kg |
| G-18JX | 17 - 22 t | 2150 Kg |
| V250R | 24 - 35 t | 2750 Kg |
| G-28JX | 25 - 38 t | 2910 Kg |
| G-25JEH | 19 - 28 t | 2650 Kg |
| G-35JEH | 29 - 48 t | 3550 Kg |
| G-45EH | 45 - 50 t | 4500 Kg |
| U-21JXR | 19 - 28 t | 2325 Kg |
| U-31JX/R | 29 - 48 t | 3000 / 3455 Kg |
| U-47JXR | 45 - 55 t | 4850 Kg |
| V480R | 45 - 60 t | 5000 Kg |



NPK Shears

| Model | Excavator Weight | Weight |
|----------|------------------|--------------|
| K-3J / R | 2.5 - 3.5 t | 280 / 330 Kg |
| K-4J / R | 3.5 - 5.5 t | 370 / 415 Kg |
| K-7J / R | 6 - 9 t | 680 / 710 Kg |



NPK Compactors

| Model | Excavator Weight | Weight |
|-------|------------------|---------|
| C-2D | 2.5 - 5.5 t | 172 Kg |
| C-3D | 3 - 8 t | 360 Kg |
| C-3DR | 3 - 8 t | 370 Kg |
| C-4C | 4.5 - 11.5 t | 436 Kg |
| C-4CR | 4.5 - 11.5 t | 475 Kg |
| C-6C | 7 - 20 t | 778 Kg |
| C-6CR | 7 - 20 t | 890 Kg |
| C800 | 14 - 30 t | 1135 Kg |
| C800R | 14 - 30 t | 1115 Kg |
| C-10C | 27 - 45 t | 1640 Kg |
| C-12C | 35 - 63.5 t | 2030 Kg |

Attachments



For 20 years MB Crusher has been a leader in the fields of crushing, demolition and recycling, by designing, producing and selling the very first jaw bucket crusher.

Since 2001, MB Crusher has offered the largest line of patented crusher buckets all over the world. With extensive innovation and development, MB Crusher now offers crusher buckets for excavators, skid loaders, and backhoes of all sizes.



MB Crusher Buckets

| Model | Excavator | Backhoe | Skid Steer | Weight | Capacity |
|-------------------|--------------------|-----------------|----------------|------------------|----------------|
| MB-C50 S4 | 6.5 - 10 t | *8 - 9 t | - | 750 Kg | 0.15 m³ |
| BF60.1 S4 | 10 - 18 t | - | - | 1650 Kg | 0.55 m³ |
| BF70.2 S4 | 16 - 25 t | - | - | 2300 Kg | 0.65 m³ |
| BF80.3 S4 | 18.5 - 29 t | - | - | 3000 Kg | 0.70 m³ |
| BF90.3 S4 | 21 - 32 t | - | - | 3500 Kg | 0.90 m³ |
| BF120.4 S4 | 30 - 45 t | - | - | 4800 Kg | 1.30 m³ |
| BF135.8 | 43 - 80 t | - | - | 7500 Kg | 1.60 m³ |
| BF150.10 | 70 - 100 t | - | - | 10,500 Kg | 2.30 m³ |
| MB-L120 S2 | 7.5 - 12 t | 5 - 9 t | 3 - 6 t | 950 Kg | 0.19 m³ |
| MB-L140 S2 | 7.5 - 13 t | 5 - 10 t | 3 - 6 t | 980 Kg | 0.20 m³ |
| MB-L160 S2 | 11 - 16 t | 7 - 11 t | 5 - 7 t | 1450 Kg | 0.35 m³ |
| MB-L200 S2 | 12 - 17 t | 7 - 12 t | 6 - 8 t | 1500 Kg | 0.43 m³ |



MB Shafts Screener

| Model | Excavator | Backhoe | Skid Steer | Weight | Capacity |
|------------------|--------------------|------------------|-------------------|----------------|----------------|
| MB-HDS207 | 1.3 - 2.8 t | 3 - 4 t | - | 98 Kg | 0.05 m³ |
| MB-HDS307 | 2.5 - 5 t | 4 - 6 t | 3 - 4 t | 480 Kg | 0.15 m³ |
| MB-HDS212 | 5 - 10 t | 8 - 9* t | 3 - 4 t | 480 Kg | 0.15 m³ |
| MB-HDS312 | 7 - 11 t | - | - | 720 Kg | 0.35 m³ |
| MB-HDS214 | 9 - 13 t | 8 - 13 t | 4 - 10 t | 820 Kg | 0.40 m³ |
| MB-HDS220 | n/a | 7 - 11 t | 4.5 - 10 t | 1000 Kg | 0.6 m³ |
| MB-HDS412 | 10 - 14 t | - | - | 1200 Kg | 0.55 m³ |
| MB-HDS314 | 13 - 20 t | 9 - 14 t | - | 1400 Kg | 0.9 m³ |
| MB-HDS320 | 18 - 24 t | 11 - 14 t | - | 2100 Kg | 1.35 m³ |
| MB-HDS323 | 22 - 35 t | 12 - 16 t | - | 2400 Kg | 1.65 m³ |
| MB-HDS523 | 30 - 45 t | - | - | 3350 Kg | 2.0 m³ |



MB Screening Buckets

| Model | Excavator | Backhoe | Weight | Capacity |
|--------------------|------------------|------------------|----------------|----------------|
| MB-S10 S4 | 6 - 9 t | - | 410 Kg | 0.32 m³ |
| MB-S14 S4 | 9 - 20 t | - | 1100 Kg | 1.10 m³ |
| MB-S18 S4 | 20 - 35 t | - | 2000 Kg | 2.40 m³ |
| MB-LS170 S2 | - | 8 - 15 t | 1450 Kg | 1.10 m³ |
| MB-LS220 S2 | - | 15 - 25 t | 2800 Kg | 2.40 m³ |



MB Drum Cutters

| Model | Excavator | Skid Steer | Pick Force | Weight | Drum |
|----------------|-------------------|------------------|-----------------|----------------|----------------|
| MB-R500 | 3.5 - 11 t | 3.5 - 6 t | 19,600 N | 300 Kg | Ø500 mm |
| MB-R700 | 6 - 13 t | 6 - 10 t | 19,600 N | 600 Kg | Ø500 mm |
| MB-R800 | 10 - 22 t | - | 33,900 N | 1000 Kg | Ø600 mm |
| MB-R900 | 19 - 35 t | - | 40,000 N | 1400 Kg | Ø680 mm |



MB Sorting Grapples

| Model | Excavator | Rotation | Weight | Capacity |
|--------------------|--------------------|-------------|----------------|----------------|
| MB-G350 S4 | 1.3 - 2.6 t | 360° | 0.085 t | 0.03 m³ |
| MB-G400 S4 | 2.4 - 4 t | 360° | 0.2 t | 0.07 m³ |
| MB-G450 S4 | 3.5 - 5 t | 360° | 0.288 t | 0.10 m³ |
| MB-G500 S4 | 5 - 8 t | 360° | 0.42 t | 0.18 m³ |
| MB-G600 S4 | 7 - 12 t | 360° | 0.63 t | 0.24 m³ |
| MB-G900 S4 | 12 - 18 t | 360° | 0.78 t | 0.43 m³ |
| MB-G1000 S4 | 18 - 25 t | 360° | 1.62 t | 0.44 m³ |
| MB-G1200 S4 | 18 - 30 t | 360° | 1.65 t | 0.71 m³ |
| MB-G1500 S4 | 20 - 30 t | 360° | 2.05 t | 1.43 m³ |

Shears



GENESIS is a global leader in the design and manufacture of high-quality excavator attachments for the scrap processing, demolition and offshore decommissioning industries.

Their broad line of products includes scrap shears, demolition shears and shears for maritime applications.



Genesis XT Shears

| Model | Excavator | Weight |
|-----------|--------------|-----------|
| GXT 115R | 14 - 21 t | 1600 Kg |
| GXT 225R | 21 - 32 t | 2400 Kg |
| GXT 335R | 26 - 37 t | 3200 Kg |
| GXT 445R | 36 - 50 t | 4700 Kg |
| GXT 555R | 45 - 65 t | 5600 Kg |
| GXT 665R | 58 - 78 t | 6400 Kg |
| GXT 775R | 67 - 84 t | 7800 Kg |
| GXT 995R | 78 - 90 t | 8900 Kg |
| GXT 1555R | 115 - 135 t | 12,100 Kg |
| GXT 2055R | Upon Request | 16,400 Kg |
| GXT 2555R | Upon Request | 25,600 Kg |



Genesis Versi Pro Multi Shears

| Model | Excavator | Weight |
|--------------------|-----------|---------|
| GVP 07 Shear | 7 t | 620 Kg |
| GVP 07 Breaker | 7 t | 630 Kg |
| GVP 07 Wire Cutter | 7 t | 560 Kg |
| GVP 15 Shear | 12 - 21 t | 1450 Kg |
| GVP 15 Breaker | 12 - 21 t | 1450 Kg |
| GVP 15 Wire Cutter | 12 - 21 t | 1340 Kg |



Genesis GDT Razer Demolition Shears

| Model | Excavator | Weight |
|---------|-----------|---------|
| GDT 190 | 20 t | 2040 Kg |
| GDT 290 | 30 t | 2940 Kg |
| GDT 390 | 41 t | 4170 Kg |
| GDT 590 | 54 t | 6360 Kg |
| GDT 890 | 82 t | 8500 Kg |

Grapples



ROTOBEC

World leader in tough handling equipment, Rotobec builds everything solid – its relationships, its experts, its products! Loyal and committed to the long term, we work hard every day to offer superior quality services! Because when you join Rotobec, you become part of the family!

Raise the industry's standards beyond expectations! To expand our leadership in our communities in order to establish ourselves in a sustainable manner, while always keeping our core values!

Rotobec Log Grapples

| Model | Weight | Height | Area | Open | Close |
|---------|---------|---------|---------------------|---------|--------|
| 3537SD | 213 Kg | 800 mm | 0.09 m ² | 955 mm | 62 mm |
| 4535SD | 222 Kg | 842 mm | 0.16 m ² | 892 mm | 113 mm |
| 4642SD | 272 Kg | 959 mm | 0.25 m ² | 1065 mm | 117 mm |
| 5052SD | 805 Kg | 1105 mm | 0.34 m ² | 1336 mm | 121 mm |
| 4042HD | 429 Kg | 1090 mm | 0.25 m ² | 1070 mm | 10 mm |
| 4048HD | 483 Kg | 1170 mm | 0.28 m ² | 1220 mm | 100 mm |
| 4552HD | 581 Kg | 1220 mm | 0.34 m ² | 1350 mm | 130 mm |
| 6058HD | 628 Kg | 1360 mm | 0.46 m ² | 1470 mm | 150 mm |
| 6065HD | 923 Kg | 1490 mm | 0.56 m ² | 1680 mm | 150 mm |
| 4552SHD | 943 Kg | 1340 mm | 0.37 m ² | 1350 mm | 100 mm |
| 4560SHD | 993 Kg | 1380 mm | 0.46 m ² | 1520 mm | 130 mm |
| 6065SHD | 1034 Kg | 1490 mm | 0.56 m ² | 1680 mm | 150 mm |



Rotobec Bunching Grapples

| Model | Weight | Height | Area | Open | Close |
|---------|---------|---------|---------------------|---------|--------|
| F360HD | 406 Kg | 879 mm | 0.36 m ² | 1880 mm | 124 mm |
| F420HD | 426 Kg | 907 mm | 0.42 m ² | 2000 mm | 145 mm |
| F520HD | 538 Kg | 914 mm | 0.52 m ² | 2210 mm | 172 mm |
| F640HD | 805 Kg | 1162 mm | 0.64 m ² | 2460 mm | 172 mm |
| F645HD | 785 Kg | 1220 mm | 0.8 m ² | 2460 mm | 200 mm |
| F800HD | 1098 Kg | 1300 mm | 1.0 m ² | 2900 mm | 200 mm |
| F1000HD | 1104 Kg | 1320 mm | 0.98 m ² | 3020 mm | 250 mm |
| F1250HD | 1266 Kg | 1370 mm | 1.23 m ² | 3200 mm | 280 mm |
| F1500HD | 1315 Kg | 1630 mm | 1.45 m ² | 3070 mm | 300 mm |
| F1750HD | 2047 Kg | 1680 mm | 1.64 m ² | 3860 mm | 300 mm |

Rotobec Poly Grab Grapples

| Model | Weight | Capacity | Flow Rate | Pressure |
|---------|--------|----------|---------------|---------------|
| OP4FL25 | 380 Kg | 250 ltr | 23 - 38 l/min | 248 - 345 bar |
| OP4FL35 | 370 Kg | 350 ltr | 23 - 38 l/min | 248 - 345 bar |
| OP4FL50 | 480 Kg | 500 ltr | 23 - 38 l/min | 248 - 345 bar |
| OP5FL25 | 380 Kg | 250 ltr | 23 - 38 l/min | 248 - 345 bar |
| OP5FL35 | 370 Kg | 350 ltr | 23 - 38 l/min | 248 - 345 bar |
| OP5FL50 | 480 Kg | 500 ltr | 23 - 38 l/min | 248 - 345 bar |



Forestry Attachments



A TEREX BRAND

Forestry professionals around the world trust the CBI name for maximum production and superior reliability in remote locations.

Responsible and effective forestry applications require equipment that can perform on difficult terrains and in difficult conditions. Horizontal grinders, wood chippers and the CBI attachment range help process trees, logs, stumps, brush, and other material into consistent final products.



CBI Ripper Tooth

| Model | Excavator | Weight |
|---------------|-----------|--------|
| Grizzly Tooth | 25 t | 793 Kg |



Forestry Attachments



CBI Log & Stump Splitters

| Model | Weight | Diameter | Flow | Motor Size |
|-------|--------|----------|-------------|------------|
| XP | 205 Kg | 355 mm | 10 - 25 gpm | 70 kW |
| XLP | 540 Kg | 406 mm | 20 - 50 gpm | 70 kW |



Model: XP

CBI Stump Shears

| Model | Weight | Excavator | Max. Jaw |
|-------|---------|-----------|----------|
| SS20 | 1814 Kg | 18 - 25 t | 1346 mm |
| SS25 | 2495 Kg | 25 - 30 t | 1803 mm |
| SS30 | 3175 Kg | 30 - 40 t | 2057 mm |
| SS40 | 3629 Kg | 40 t > | 2210 mm |



Model: SS20



CBI Root Rakes

| Model | Weight | Excavator | Max. Jaw Opening |
|-------|---------|-----------|------------------|
| RR30 | 3400 Kg | 30 - 40 t | 1880 mm |



Model: RR30



Material & Scrap Handlers



SENNEBOGEN®

SENNEBOGEN was founded in 1952 to develop and produce machines for lifting and material handling applications. The company has now established itself as a full service provider and quality leader in crane technology and material handling.

As an international company, SENNEBOGEN develops and produces complete model ranges for duty cycle cranes, crawler cranes, telescopic and harbour cranes, material handlers, telehandlers as well as base carriers. In addition to flexible machines from series production, SENNEBOGEN also designs individual specialised machines in close collaboration with its clients.

Battery Material Handlers



SENNEBOGEN
Battery Material
Handler

817E BATTERY

Operating Weight
17.2 - 18.6 t

Max Range
9 m

Power Output
252 kWh



SENNEBOGEN
Battery Material
Handler

824G BATTERY

Operating Weight
26.3 - 27.3 t

Reach
12 m

Power Output
90 kW, 392 kWh battery capacity



SENNEBOGEN
Battery Material
Handler

825E BATTERY

Operating Weight
28.8 - 32.8 t*

Reach
13 m

Power Output
378 kWh



SENNEBOGEN
Battery Material
Handler

826G BATTERY

Operating Weight
28.6 - 31.7 t

Reach
13 m

Power Output
90 kW, 392 kWh battery capacity



Visit our website
to find out more

Waste Handlers



SENNEBOGEN
Material Handler

817E

Operating Weight
17.2 - 18.6 t*

Max Range
9 m*

Power Output
Cummins 97 kW*



SENNEBOGEN
Material Handler

822G

Operating Weight
22 - 24.3 t*

Reach
10 m*

Power Output
Cummins 110 kW*



SENNEBOGEN
Material Handler

824G

Operating Weight
26.3 - 27.3 t*

Reach
12 m*

Power Output
118 kW*



SENNEBOGEN
Material Handler

825E

Operating Weight
28.8 - 32.8 t*

Max Range
14 m*

Power Output
Cummins 129 kW*



SENNEBOGEN
Material Handler

| |
|---|
| 826G |
| Operating Weight 28.6 - 31.7 t* |
| Reach 13 m* |
| Power Output 127 kW* |



SENNEBOGEN
Material Handler

| |
|---|
| 830G |
| Operating Weight 38 - 43.5 t* |
| Reach 17 m* |
| Power Output Cummins 186 kW* |



Scrap Handlers



SENNEBOGEN Scrap Handler

817E

Operating Weight
17.2 - 18.6 t*

Max. Range
9 m*

Power Output
Cummins 97 kW*



SENNEBOGEN Scrap Handler

822G

Operating Weight
24.4 t*

Max. Range
10 m*

Power Output
Cummins 97 kW*



SENNEBOGEN Scrap Handler

824G

Operating Weight
26.3 t*

Max. Range
12 m*

Power Output
Cummins 118 kW*



SENNEBOGEN Scrap Handler

825E

Operating Weight
28.8 - 32.8 t*

Max. Range
14 m*

Power Output
Cummins 129 kW*



SENNEBOGEN Scrap Handler

826G

Operating Weight
28.6 t*

Max. Range
13 m*

Power Output
Cummins 127 kW*



SENNEBOGEN Scrap Handler

830G

Operating Weight
40 - 41.3 t*

Max. Range
17 m*

Power Output
Cummins 186 kW*



SENNEBOGEN Scrap Handler

835E

Operating Weight
45.5 - 66 t*

Max. Range
20 m*

Power Output
Cummins 231 kW*



SENNEBOGEN Scrap Handler

835G HYBRID

Operating Weight
47 t*

Max. Range
20 m*

Power Output
Cummins 210 kW*



SENNEBOGEN

Scrap Handler

840E

Operating Weight
53 - 67 t*

Max. Range
20 m*

Power
231 kW*



SENNEBOGEN

Scrap Handler

850E

Operating Weight
62 - 100 t*

Max. Range
21 m*

Power Output
Cummins 298 kW*



SENNEBOGEN

Scrap Handler

850G HYBRID

Operating Weight
64.5 - 102.5 t*

Max. Range
21 m*

Power
231 kW*



SENNEBOGEN

Scrap Handler

855E HYBRID

Operating Weight
77 - 110 t*

Max. Range
21 m*

Power
231 kW*



SENNEBOGEN

Scrap Handler

865E HYBRID

Operating Weight
90 - 110 t*

Max. Range
25 m*

Power
261 kW*



SENNEBOGEN

Scrap Handler

870E HYBRID

Operating Weight
97 - 145 t*

Max. Range
27 m*

Power
261 kW*



SENNEBOGEN

Scrap Handler

875G HYBRID

Operating Weight
140 - 195 t*

Max. Range
32 m*

Power
391 kW*

High Reach Demolition



SENNEBOGEN Demolition

825E

Operating Weight
28.5 - 30 t

Reach
15 m

Power Output
129 kW



SENNEBOGEN Demolition

830E

Operating Weight
40 - 52 t

Reach
23 m

Power Output
209 kW



SENNEBOGEN Demolition

870E

Operating Weight
110 - 117 t

Reach
36 m

Power Output
298 kW



Visit our website
to find out more



Modern Hybrid Technology

Up to 50% Energy Savings

- Permanent high power support of the machine by the Green Hybrid System*
- Longevity, reliability and a high degree of efficiency due to little temperature and pressure changes in the system.

1. Functional Safety

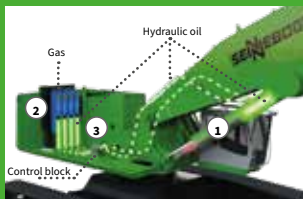
Use of hydraulic and proven standard components on the boom.

2. Operator & Equipment Safety

Installation of pressure containers in the rear of the machine.

3. Convenient Service

By simple oil pressure release and automatically controlled hydraulic system filling.



* Available on 855E - 895E. All technical specifications are subject to change.



Visit our website
to find out more

Timber Handlers



SENNEBOGEN
Timber Handler
Tree Care Handler

718E

Operating Weight
21.4 - 24 t*

Reach
13 m*

Power Output
123 kW*



SENNEBOGEN
Timber Handler
Tree Care Handler

724G

Operating Weight
29 t*

Stacking Height
9 m*

Power Output
123 kW*



SENNEBOGEN
Timber Handler
Tree Care Handler

726G

Operating Weight
31 t*

Stacking Height
9 m*

Power Output
129 kW*



SENNEBOGEN
Timber Handler
Tree Care Handler

728E

Operating Weight
32 - 35 t*

Reach
12 m

Power Output
125 kW



SENNEBOGEN
Timber Handler
Tree Care Handler

738E

Operating Weight
28.8 - 32.8 t*

Reach
13 m

Power Output
378 kWh



SENNEBOGEN
Timber Handler
Pick & Carry

723E

Operating Weight
27 t

Reach
11 m

Power Output
119 kW



SENNEBOGEN
Timber Handler
Pick & Carry

730E

Operating Weight
34 t*

Reach
11 m*

Power Output
168 kW



SENNEBOGEN
Timber Handler
Pick & Carry

735E

Operating Weight
43.9 t*

Reach
11 m*

Power Output
125 kW

Port Handlers



SENNEBOGEN
Port Handler

830E

Operating Weight
38.5 - 48 t

Power Output
**Cummins
168 kW**



SENNEBOGEN
Port Handler

835G

Operating Weight
47.3 t

Power Output
**Cummins
210 kW**



SENNEBOGEN
Port Handler

840E

Operating Weight
53 - 67 t

Power Output
231 kW



SENNEBOGEN
Port Handler

850E

Operating Weight
62 - 100 t

Power Output
298 kW



SENNEBOGEN
Port Handler

850G HYBRID

Operating Weight
64.5 - 102.5 t

Power Output
231 kW



SENNEBOGEN
Port Handler

855E HYBRID

Operating Weight
77 - 110 t

Power Output
231 kW



SENNEBOGEN
Port Handler

865E HYBRID

Operating Weight
90 - 110 t

Power Output
261 kW



SENNEBOGEN
Port Handler

870E HYBRID

Operating Weight
97 - 145 t

Power Output
261 kW



SENNEBOGEN
Port Handler

875G HYBRID

Operating Weight
140 - 195 t

Power Output
391 kW



SENNEBOGEN
Port Handler

885G HYBRID

Operating Weight
270 - 320 t

Power Output
597 kW



SENNEBOGEN
Port Handler

895E HYBRID

Operating Weight
420 t

Power Output
585 kW

The EQ Principle

For demanding material handling in the scrap yard, for bulk material and cargo in the port, but also in the steel or timber mill: The SENNEBOGEN EQ G Balancer material handler takes on tasks centrally at the site with a maximum reach of up to 42 m - whether with orange peel grab, timber grab or clamshell bucket. With the robust balancer of the latest SENNEBOGEN G machine generation, you save up to 75% energy and work emission-free thanks to the electric engine!

Your Advantages:

The EQ Principle - Efficient, Effective, Simple

Lower operating costs due to low energy consumption: Save up to 75% energy!

Large reach for a variety of individual applications

Individual solution: Configure your individual balancer material handler from our modular system!

Simple, easy to maintain, safe installation

Low maintenance and less wear due to manageable technology.

SENNEBOGEN Balance Material Handler

EQ 'G' SERIES RANGE

Operating Weight
Upto 370 t*

Max Range
Upto 42 m*

Power Output
Upto Electric 315 kW*





SENNEBOGEN

Telehandler

| |
|-------------------------------------|
| 340G |
| Operating Weight 9,400 Kg |
| Reach 7.7 m* |
| Power Output 100 kW* |



SENNEBOGEN

Telehandler

| |
|------------------------------------|
| 360G |
| Operating Weight 12.5 t* |
| Stacking Height 8.5 m* |
| Max. Load Capacity 6 t* |

Visit our website
to find out more

Crushers & Screeners



Finlay® a Terex Brand have been manufacturing a comprehensive range of tracked mobile crushing, screening and recycling equipment for 65 years. Finlay® a Terex Brand are global pioneers in tracked mobile solutions and offer a comprehensive range of equipment to the quarrying, mining, construction, demolition and recycling industries.

Their range of innovative machines are manufactured to provide efficient production, low operational costs and ease of maintenance.



FINLAY
Jaw Crusher

J-960

Operating Weight
28,000 Kg

Jaw Size
900 x 600 mm



FINLAY
Jaw Crusher

J-1160

Operating Weight
35,350 Kg

Jaw Size
1000 x 600 mm



FINLAY
Jaw Crusher

J-1170AS+

Operating Weight
54,600 Kg

Jaw Size
1100 x 700 mm



FINLAY
Jaw Crusher

J-1170+

Operating Weight
48,900 Kg

Jaw Size
1100 x 700 mm



FINLAY
Jaw Crusher

J-1175 Electric

Operating Weight
54,300 Kg

Jaw Size
1070 x 760 mm



FINLAY
Jaw Crusher

J-1175

Operating Weight
51,300 Kg

Jaw Size
1070 x 760 mm



FINLAY
Jaw Crusher

J-1280 HYBRID

Operating Weight
75,060 Kg

Jaw Size
1200 x 820 mm



FINLAY
Jaw Crusher

J-1480

Operating Weight
79,450 Kg

Jaw Size
1415 x 820 mm



Visit our website
to find out more

Impact Crushers



FINLAY
Impact Crusher

I-120

Operating Weight
37,000 Kg

Rotor Size
Ø1033 x 1100 mm



FINLAY
Impact Crusher

I-120 RS

Operating Weight
48,150 Kg

Rotor Size
Ø1033 x 1100 mm



FINLAY
Impact Crusher

I-120 ELECTRIC

Operating Weight
48,150 Kg

Rotor Size
Ø1033 x 1100 mm



FINLAY
Impact Crusher

I-140

Operating Weight
48,720 Kg

Rotor Size
Ø1270 x 1220 mm



FINLAY
Impact Crusher

I-140 RS

Operating Weight
72,300 Kg

Rotor Size
Ø1270 x 1220 mm



Visit our website
to find out more





FINLAY
Cone Crusher

C-1540

Operating Weight
33,350 Kg

Cone Head Diameter
1000 mm



FINLAY
Cone Crusher

C-1540 P

Operating Weight
40,220 Kg

Cone Head Diameter
1000 mm



FINLAY
Cone Crusher

C-1540 RS

Operating Weight
51,120 Kg

Cone Head Diameter
1000 mm



FINLAY
Cone Crusher

C-1540 ELECTRIC

Operating Weight
45,320 Kg

Cone Head Diameter
1000 mm



FINLAY
Cone Crusher

C-1545

Operating Weight
43,440 Kg

Cone Head Diameter
1150 mm



FINLAY
Cone Crusher

C-1545 P

Operating Weight
51,680 Kg

Cone Head Diameter
1150 mm



FINLAY
Cone Crusher

C-1550+

Operating Weight
50,250 Kg

Cone Head Diameter
1300 mm



FINLAY
Cone Crusher

C-1550 P

Operating Weight
64,820 Kg

Cone Head Diameter
1300 mm



FINLAY
Cone Crusher

C-1554

Operating Weight
61,060 Kg

Cone Head Diameter
1380 mm



Visit our website
to find out more





FINLAY
Heavy Duty
Screener

863+

Operating Weight
18,300 Kg

Screenbox
2.76 x 1.22 m



FINLAY
Heavy Duty Grid

595

Operating Weight
19,080 Kg

Screenbox
4.5 x 2.75 m



FINLAY
Heavy Duty
Screener

873+ SPALECK

Operating Weight
25,800 Kg

Screenbox
3.66 x 1.53 m



FINLAY
Heavy Duty
Screener

873+

Operating Weight
25,800 Kg

Screenbox
3.66 x 1.53 m



FINLAY
Heavy Duty
Screener

883+ SPALECK

Operating Weight
30,500 Kg

Screenbox
4.8 x 1.53 m



FINLAY
Heavy Duty
Screener

883+

Operating Weight
31,000 Kg

Screenbox
4.8 x 1.53 m



FINLAY
Heavy Duty
Screener

883+ TS

Operating Weight
34,180 Kg

Screenbox
4.8 x 1.53 m



FINLAY
Scalping Screener

883+ Electric

Operating Weight
32,500 Kg

Screenbox
4.8 x 1.53 m



FINLAY
Scalping Screener

890

Operating Weight
37,000 Kg

Screenbox
6.1 x 1.8 m



FINLAY
Heavy Duty
Screener

893+

Operating Weight
48,000 Kg

Screenbox
6.1 x 1.83 m



FINLAY
Horizontal
Screener

984

Operating Weight
43,100 Kg

Screenbox
6.1 x 1.93 m



FINLAY
Inclined Screener

683

Operating Weight
24,250 Kg

Screenbox
3.66 x 1.52 m



FINLAY
Inclined Screener

674

Operating Weight
28,500 Kg

Screenbox
3.66 x 1.52 m



FINLAY
Inclined Screener

684 2 DECK

Operating Weight
28,750 Kg

Screenbox
4.3 x 1.7 m



FINLAY
Inclined Screener

684 3 DECK

Operating Weight
33,500 Kg

Screenbox
4.3 x 1.7 m



FINLAY
Inclined Screener

693+

Operating Weight
34,850 Kg

Screenbox
6.1 x 1.53 m



FINLAY
Inclined Screener

693+ SPALECK

Operating Weight
34,850 Kg

Screenbox
5.8 x 1.5 m



FINLAY
Inclined Screener

694+

Operating Weight
39,250 Kg

Screenbox
6.1 x 1.53 m



FINLAY
Inclined Screener

696 2 DECK

Operating Weight
33,800 Kg

Screenbox
6.1 x 1.7 m



FINLAY
Inclined Screener

696 3 DECK

Operating Weight
40,050 Kg

Screenbox
6.1 x 1.7 m

Intelligent & Tracked Conveyors



FINLAY
Low Level Feeder

TF-50L

Conveyor Length
22.5 m

Power Output
500 tph



FINLAY
High Level Feeder

TF-50 H

Conveyor Length
22.5 m

Power Output
600 tph



FINLAY
Tracked Conveyor

TC-65

Conveyor Length
19.79 m

Power Output
500 tph



FINLAY
High Level Feeder

TF-75L ORBITAL

Conveyor Length
22.5 m

Power Output
600 tph



FINLAY
Low Level Feeder

TF-75L

Conveyor Length
22.6 m

Power Output
600 tph



FINLAY
High Level Feeder

TF-75H

Conveyor Length
22.6 m

Power Output
600 tph



FINLAY
Radial Conveyor

TC-80

Conveyor Length
22.8 m

Power Output
500 tph



FINLAY
Tracked Conveyor

TC-100

Conveyor Length
30 m

Power Output
600 tph



FINLAY
Radial Conveyor

WR-80

Conveyor Length
22.85 m

Power Output
300 tph



FINLAY
Radial Conveyor

TR-80

Conveyor Length
22.82 m

Power Output
600 tph



FINLAY
Telescopic

RT-140

Conveyor Length
42 m

Power Output
600 tph



Visit our website
to find out more



Shredders, Screeners & Turners



Eggersmann offers an extensive range of solutions for sustainable waste management and resource recovery across key sectors including recycling, composting, construction, and energy generation. Their portfolio spans advanced shredders, screening systems, compost turners, and complete plant engineering services, designed to transform waste into valuable resources such as biogas, compost, and alternative fuels.



EGGERSMANN
Crusher / Shredder

IMPAKTOR 250

Operating Weight
Up to 15,000 Kg

Throughput
Up to 110 t/h

Shredders



EGGERSMANN
Twin Shaft Shredder

C 14

Operating Weight
Upto 2,200 Kg

Power Output
16.1 kW



EGGERSMANN
Twin Shaft Shredder

FORUS F 25

Operating Weight
Up to 18,500 Kg

Throughput
Up to 40 t/h



EGGERSMANN
Twin Shaft Shredder

FORUS F 38

Operating Weight
Up to 19,500 Kg

Throughput
Up to 80 t/h



EGGERSMANN
Single Shaft Shredder

TEUTON Z 50

Operating Weight
Up to 27,000 Kg

Throughput
Up to 95 t/h



EGGERSMANN
Single Shaft Shredder

TEUTON Z 60

Operating Weight
Up to 34,000 Kg

Throughput
Up to 120 t/h

Trommel & Star Screens



EGGERSMANN Trommel Screen

BLUE SELECT 15.44

Operating Weight
Up to 10,250 Kg

Throughput
Up to 100 m³/h



EGGERSMANN Trommel Screen

TERRA SELECT T 50

Operating Weight
16,000 Kg

Throughput
Up to 150 m³/h



EGGERSMANN Trommel Screen

TERRA SELECT T 60

Operating Weight
Up to 22,000 Kg

Throughput
Up to 200 m³/h



EGGERSMANN Star Screen

STAR SELECT S 60

Operating Weight
Up to 25,000 Kg

Throughput
Up to 300 m³/h



EGGERSMANN Trommel Screen

TERRA SELECT T 70

Operating Weight
Up to 25,000 Kg

Throughput
Up to 250 m³/h



Visit our website
to find out more



Wind Sifting Unit



EGGERSMANN
Wind Sifting Unit

AIRFIX V60

Operating Weight
Up to 1,600 Kg

Power Output
27.5 hp



Visit our website
to find out more



Windrow Turners



EGGERSMANN
Windrow Turner

BACKHUS A 30

Weight
1,900 Kg

Throughput
Up to 700 m³/h



EGGERSMANN
Windrow Turner

BACKHUS A 38

Weight
8,000 Kg

Throughput
Up to 1,500 m³/h



EGGERSMANN
Windrow Turner

BACKHUS A 45

Weight
14,000 Kg

Throughput
Up to 3,000 m³/h



EGGERSMANN
Windrow Turner

BACKHUS A 50 / A 55

Weight
Up to 18,000 Kg

Throughput
Up to 4,500 m³/h



EGGERSMANN
Windrow Turner

BACKHUS A 60 / A 65

Weight
Up to 23,000 Kg

Throughput
Up to 5,500 m³/h



EGGERSMANN
Windrow Turner

BACKHUS A 75

Weight
33,000 Kg

Throughput
Up to 7,000 m³/h

Windrow Turners



EGGERSMANN
Windrow Turner

BACKHUS CON 60

Weight
51,000 Kg

Throughput
Up to 3,800 m³/h



EGGERSMANN
Windrow Turner

BACKHUS CON 80

Weight
53,000 Kg

Throughput
Up to 6,000 m³/h



EGGERSMANN
Windrow Turner

BACKHUS CON 100

Weight
55,000 Kg

Throughput
Up to 7,200 m³/h



EGGERSMANN
Windrow Turner

LANE TURNER LT 45 / LT 50

Weight
28,000 Kg

Throughput
Up to 2,000 m³/h





Visit our website
to find out more

Crusher & Screeners



EvoQuip offers a comprehensive portfolio of products to address the needs of the compact crushing and screening markets in six key industries: building and construction; quarries; agriculture and landscaping; plant hire and recycling.

User friendliness is at the heart of the brand and as new products are developed the focus will be on simplicity, easy maintenance, fuel efficiency and ease of transport.

Jaw & Impact Crushers



EVOQUIP Jaw Crusher

BISON 35

Transport Length
4450 mm

Throughput
Up to 30 tph



EVOQUIP Jaw Crusher

BISON 160

Transport Length
6900 mm

Throughput
Up to 100 tph



EVOQUIP Jaw Crusher

BISON 170

Transport Length
8200 mm

Throughput
Up to 110 tph



EVOQUIP Impact Crusher

COBRA 230

Transport Length
9320 mm

Throughput
Up to 250 tph



EVOQUIP Impact Crusher

COBRA 230R

Transport Length
13,300 mm

Throughput
Up to 250 tph



EVOQUIP Impact Crusher

COBRA 290

Transport Length
9920 mm

Throughput
Up to 290 tph



EVOQUIP Impact Crusher

COBRA 290R

Transport Length
14,760 mm

Throughput
Up to 290 tph



Visit our website
to find out more



Shredders & Screeners



EVOQUIP
Compact Shredder

CAIMAN 150

Transport Length
8400 mm

Shaft Length
1500 mm



EVOQUIP
Scalping Screener

HARRIER 220

Transport Length
4360 mm

Throughput
Up to 80 tph



EVOQUIP
Scalping Screener

COLT 600

Transport Length
10,980 mm

Throughput
Up to 280 tph



EVOQUIP
Scalping Screener

COLT 800

Transport Length
9220 mm

Throughput
Up to 280 tph



EVOQUIP
Scalping Screener

COLT 1000

Transport Length
11,000 mm

Throughput
Up to 360 tph



EVOQUIP
Compact Finishing Screen

FALCON 820

Transport Length
12,000 mm

Throughput
Up to 303 tph



A TEREX BRAND

Forestry professionals around the world trust the CBI name for maximum production and superior reliability in remote locations.

Responsible and effective forestry applications require equipment that can perform on difficult terrains and in difficult conditions. Horizontal grinders, wood chippers and the CBI attachment range help process trees, logs, stumps, brush, and other material into consistent final products.



CBI
Material Density Separator

AirMax

Operating Weight
5,732 Kg

Transport Length
9700 mm

Flail Debarkers & Disc Chippers



CBI
Flail Debarker

604 SERIES

Operating Weight
44,400 Kg

Power Output
175 tph

Power Output
CAT C18 (600 hp)



CBI
Combo Flail Debarker / Disc Chipper

7544

Operating Weight
51,255 Kg

Power Output
200 tph

Power Output
CAT C32 (1125 hp)

Customised Stationary Equipment & Drum Chippers



CBI
Grizzly Mills

3648 | 4860

Operating Weight
6,803 - 20,865 Kg

Rotor Diameter
Model: 3648 914 mm | Model: 4860 1219 mm

Drum Length
910 mm - 1820 mm

Power Output
110 - 1000 kW



CBI
Drum Chipper

CHIPMAX 364 SERIES

Operating Weight
20,500 Kg

Power Output
Scania DC13, Tier IV Final/Stage V, 550 HP
Scania DC16, Tier IV Final/Stage V, 770HP
CAT C18, Tier IV Final, 755HP

Horizontal Grinders & Wood Chippers



CBI Grinder

5800BT

Operating Weight
31,297 - 33,112 Kg

Power Output
Scania DC16
(770 hp)
or CAT C18 (765 hp)



CBI Grinder / Chipper

5400 SERIES

Operating Weight
31,751 - 34,473 Kg

Power Output
Scania DC16
(770 hp)
or CAT C18 (765 hp)



CBI Grinder

6800 SERIES

Operating Weight
40,000 Kg

Power Output
CAT C27 (1050 hp)
or C32 (1125 hp)



CBI Grinder / Chipper

6400 SERIES

Operating Weight
40,823 - 47,173 Kg

Power Output
CAT C27 (1050 hp)
or C32 (1125 hp)



CBI Grinder

5900T

Operating Weight
36,287 - 39,009 Kg

Power Output
CAT, Diesel C18
755-HP (570kW),
Tier 4 Final



CBI Wood Drum Chipper

CHIPMAX 484

Operating Weight
25,400 Kg

Power Output
120 tph

Engine
Scania DC16 (770 hp)
or CAT C18 (765 hp)



CBI Wood Disc Chipper

754

Operating Weight
41,200 Kg

Power Output
200 tph

Engine
CAT C27 (1050 hp)
or C32 (1125 hp)



CBI Truck Mounted Wood (Drum) Chipper

CHIPMAX 484 VR

Operating Weight
21,800 Kg

Power Output
Scania DC16 (770 hp)
or Caterpillar C18
(765 hp)

Conveyors & Hoppers



The ProStack range offers a comprehensive portfolio of products to address the needs of the bulk material handling and product stockpiling industries, providing high performance equipment that is simple to operate and maintain, automated during operation and requiring minimal setup time.

Regardless of the type of job, mobile conveyors can improve safety by reducing traffic levels on site and save customers money by eliminating the double handling of material, coupled with low operating and maintenance costs.



PROSTACK - Telescopic Conveyors

| Model | Conveyor Length | Capacity | Stockpile Height | Stockpile Capacity |
|-----------|-----------------|-----------|------------------|------------------------|
| TW 36-140 | 42 m | 100,000 t | 14,000 mm | 62,500 m ³ |
| TW 42-170 | 52 m | 182,176 t | 17,375 mm | 113,729 m ³ |
| TW 42-190 | 58 m | 237,943 t | 18,085 mm | 148,543 m ³ |



PROSTACK - Tracked Conveyors

| Model | Conveyor Length | Belt Width | Max Discharge | Max Capacity |
|---------|-----------------|------------|---------------|--------------|
| TR 80 | 22.85m | 0.9m | 9.2m | 300 tph |
| LF 50 | 15.6m | 1.05m | 7.37m | 450 tph |
| HF 50 | 15.6m | 1.05m | 7.2m | 450 tph |
| TC 65 | 19.06m | 1.05m | 9.45m | 500 tph |
| TC 80 | 21.4m | 1.05m | 10.41m | 500 tph |
| HF 75 | 22.5m | 1.2m | 10.5m | 600 tph |
| LF 75 | 22.5m | 1.2m | 10.1m | 600 tph |
| TR 80 | 22.5m | 1.2m | 10.5m | 600 tph |
| LF 75 S | 22.5m | 1.2m | 10.9m | 600 tph |
| HF 75 S | 22.5m | 1.2m | 10.9m | 600 tph |
| HF 75 O | 22.6m | 1.2m | 9.8m | 600 tph |
| TR 80 | 22.7m | 1.05m | 10.9m | 600 tph |
| HF 85 | 28m | 1.2m | 11.6m | 600 tph |
| TC 100 | 30m | 1.05m | 13.1m | 600 tph |



PROSTACK - Bulk Reception Feeders

| Model | Conveyor Length | Belt Width | Transport Length |
|-------|-----------------|------------|------------------|
| WR 80 | 22.85 m | 0.9 m | 9.2 m |
| LF 50 | 15.6 m | 1.05m | 7.37 m |



PROSTACK - Port Hoppers

| Model | Hopper Aperture | Machine Height | Hopper Capacity |
|---------|-----------------|----------------|---|
| PH 60 | 6 m x 6 m | 9 m | 50m ³ (below grid) |
| PH 63HD | 6.3 m x 6.3 m | 13.6 m | 60m ³ (with filtration) 80m ³ (without filtration) |
| PH 67 | 6.7 m x 6.7 m | 8.9 m | 61.3m ³ (below grid) |
| PH 67HD | 6.7m x 6.7m | 10m | 60m ³ (below grid) |
| PH 70 | 7m x 7m | 9.5m | 60m ³ (below grid) |
| PH 75 | 7.5m x 7.5m | 9.6m | 60m ³ (below grid) |

Sand & Gravel Recovery

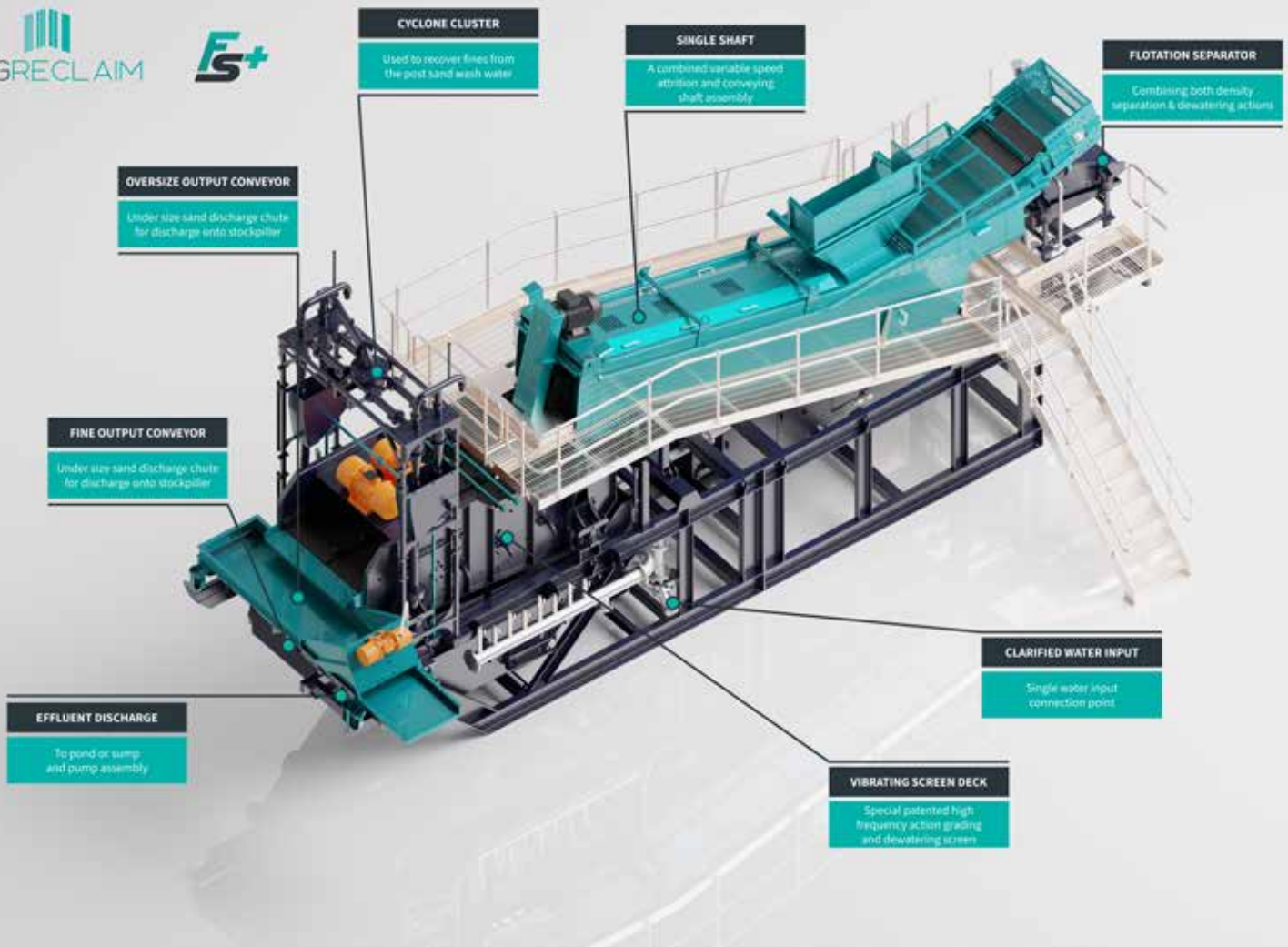



AGGRECLAIM

Molson Washing are proud to introduce the new mobile washing plant solution - The AggReclaim FS+.

The product of many years experience in a constantly changing industry, the AggReclaim FS+ is ideally suited for use across all of the core quarrying, recycling and remediation industries. The AggReclaim FS+ has been developed from the outset to be a versatile, compact and most importantly cost and energy efficient unit.

Sand & Gravel Recovery



The Aggreclaim FS+ is perfectly suited to a range of applications:

Sand & Gravel

To periodically supplement increased production at any existing site. Due to the low water requirement the existing ponds will be not need to be enlarged for temporary production.



GRAVEL

Inert arisings cleaning

Lots of sites have the middle product off a three-way scalper in stock as a waste. This unit will remove a large percentage of floating debris. It will also reclaim a very clean aggregate +4mm. Any sand present will be recovered by the onboard unique fines recovery system.



INERT ARISINGS

Quarry waste

All limestone, grit stone & hard rock quarries produce scalplings and dust as a by product of crushing & dry screening that is essentially waste. This system will with a very low water flow produce saleable products from this waste. Most rock quarries have limited water ponds available.



QUARRY WASTE

Wet Processing Equipment



CDE

For over 25 years, CDE have designed, manufactured and commissioned more wet processing plants than any other company in the world.

Their mission is to be the number 1 wet processing company in every country in the world. They have delivered almost 2000 projects globally, and their global headquarters in Cookstown, Northern Ireland is the world's largest campus dedicated to the wet processing of materials in the sand & aggregates, mining, C&D waste recycling, industrial sands and environmental sectors.



| | |
|--|---|
| CDE Aggregate Wash Plants | AGGMAX |
| | Commission & Install New Facility |
| | Design & Install Upgrades |

| | |
|--|---|
| CDE Aggregate Wash Plants | AQUACYCLE |
| | Commission & Install New Facility |
| | Design & Install Upgrades |



| | |
|--|---|
| CDE Aggregate Wash Plants | EVOWASH |
| | Commission & Install New Facility |
| | Design & Install Upgrades |

| | |
|--|---|
| CDE Aggregate Wash Plants | M-SERIES |
| | Commission & Install New Facility |
| | Design & Install Upgrades |

Recycling Systems



Terex Recycling systems specialises in the design and build of stationary and modular recycling systems, ultimately providing customers with a 'one stop shop' to meet their recycling needs.

This new business unit will complement Terex's existing environmental lines: Terex Ecotec (mobile wood processing, biomass and recycling equipment).

TEREX RECYCLING SYSTEMS

Air Separator



TAS-150

Terex Recycling Systems TAS-150 Air Separator has a 1.5m (4' 11") wide input conveyor with fully adjustable positioning and is used for the separation of waste by density. The TAS-150 is suitable for many applications, its robust solid design allows it to withstand the harshest applications such as construction and demolition waste, whilst also being suitable for:

- Commercial waste
- Household waste
- Compost/Organics

TEREX RECYCLING SYSTEMS

Static Electric Trommel Screen



TTS - 620SE

Terex Recycling Systems TTS-620SE Static Electric Trommel offers operators unparalleled versatility in applications, production rates and effortless serviceability. Specifically designed for screening compost/organics, biomass, soil, gravel and waste, it stands as an ideal choice for your needs.

TEREX RECYCLING SYSTEMS

Air Separator



TDS-150

The TDS-V20SE's screening system, available in various sizes, incorporates an intelligent protection system that allows operators to select their desired particle size while effectively handling foreign objects. This capability to produce a controlled product size in a single pass not only saves time but also ensures high efficiency.

Designed to handle a wide range of materials including C&I waste, wood and green waste, the TDS-V20SE excels in shredding difficult materials and producing high spec RDF & SRF products. Its standard feed-in height of 4m (13' 1") can be customised to suit specific facility operations.

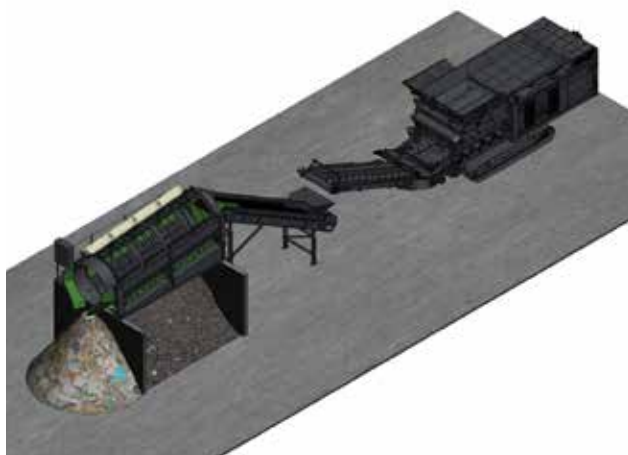


TEREX RECYCLING SYSTEMS

25 tph C&D waste sorting line consisting of:

Waste Sorting Line

Belt feeder, Incline conveyor,
Trommel screen,
Fines collection conveyor,
Fines stockpile conveyor,
4 bay double sided picking station,
Electrical control panel



TEREX RECYCLING SYSTEMS

RDF screening plant consisting of:

RDF Screening Plant

Mobile shredder
(by customer),
Incline conveyor,
Trommel c/w fines bay
and maintenance walkway,
Electrical control panel



TEREX RECYCLING SYSTEMS

20 tph C&D processing line consisting of:

Processing Line

Belt feeder,
Incline conveyor, Trommel,
5 bay picking station,
Magnet



TEREX RECYCLING SYSTEMS

30 tph C&D System consisting of:

C&D System

Belt feeder, Incline conveyor, 3D combi screen, Fines stockpile conveyor with magnet, Midsize magnet & blower, 4 bay double sided picking station, Oversize magnet & blower



TEREX RECYCLING SYSTEMS

60 tph Wood processing line consisting of:

Wood Processing Line

60 cubic metre walking floor feeder with metering drum, Incline conveyor, Cross belt magnet, Double deck screen (2.4m x 10m), Midsize incline conveyors (x2), 2m eddy current separator with vibrating feeder and drum magnet (x2), Collection conveyor, Stockpile conveyor, Electrical control panel

Making a difference together

COMMUNITY CHAMPIONS



How do we make a difference

We've built a network of regional Community Champions who play a vital role in identifying opportunities where Molson can make the greatest impact. They support causes suggested by their teammates and lead efforts in local fundraising, volunteering, donations, and raising awareness. By inspiring and engaging their colleagues, our Community Champions help extend our reach and amplify our impact in the local community. We take pride in our community initiatives and remain committed to creating a positive, lasting difference.

Our *impact* so far



4,137

Hours contributed



£108,600+

Funds donated



24,000 Kg+

Weight of contributions

Why we *take part*

Make a positive impact

We're dedicated to creating meaningful change in the communities where we live and work.



Inspire others to make a change

We provide a platform for our colleagues to bring forward causes they care about, inspiring collective action.



Strengthen local communities

By focusing on local causes, we aim to build meaningful relationships and address the unique needs of our regions.

Led by our teams choice

Our team members choose the causes that matter most to them, driving real change in our local communities.



Proud to Support



Environmentally focused approach

How we support *our customers*



Shaping new product development

We partner with leading OEMs to provide high-quality machinery, cutting-edge technology, and sustainable solutions. These collaborations ensure reliable performance, expert support, and long-term value, helping businesses operate efficiently while reducing environmental impact.



Consultative sales approach

We provide more than machinery – offering expert guidance to help businesses boost efficiency, cut costs, and operate sustainably. From selecting the right equipment to optimising fleets, we help customers achieve their goals while reducing environmental impact.



Adopting new technology

By providing real-time data on fuel consumption, idle times, and machine performance, telematics helps operators optimise usage, lower emissions, and reduce unnecessary wear and tear.



Cross industry collaboration

We believe in the power of cross-industry collaboration to drive innovation, efficiency, and sustainability. These partnerships allow us to share expertise, implement new technologies, and create smarter, more sustainable operations for our customers.

Conscious *of our impact*



Reducing operational waste

We are committed to reducing operational waste by extending the lifecycle of equipment, minimising landfill waste, and lowering emissions to support a more sustainable, cost-efficient industry. As a leader in heavy machinery, we continuously embrace eco-friendly solutions to reduce our environmental impact and drive a greener future.



Future proofing infrastructure

Our investment includes electrical charging stations for next-generation equipment and dedicated storage for hydrogen fuel, ensuring we are ready for the transition to cleaner energy solutions.



Investing in green technology

Our depots are equipped with solar panels, generating clean, renewable energy to cut emissions and lower reliance on fossil fuels. We've also integrated biomass boilers, using sustainable fuel sources to provide an eco-friendly heating solution.



Governance & compliance

We are committed to maintaining ISO-certified standards, including ISO 9001 (Quality Management), ISO 14001 (Environmental Management), and ISO 45001 (Health & Safety Management), reinforcing our dedication to excellence, sustainability, and workplace safety.

View your entire fleet in one clean and accessible place



Service
Due
50 Hrs



Utilisation
89%



Fuel
Consumption
-25%



Idle time
32%



CO₂
emissions
-3.2t



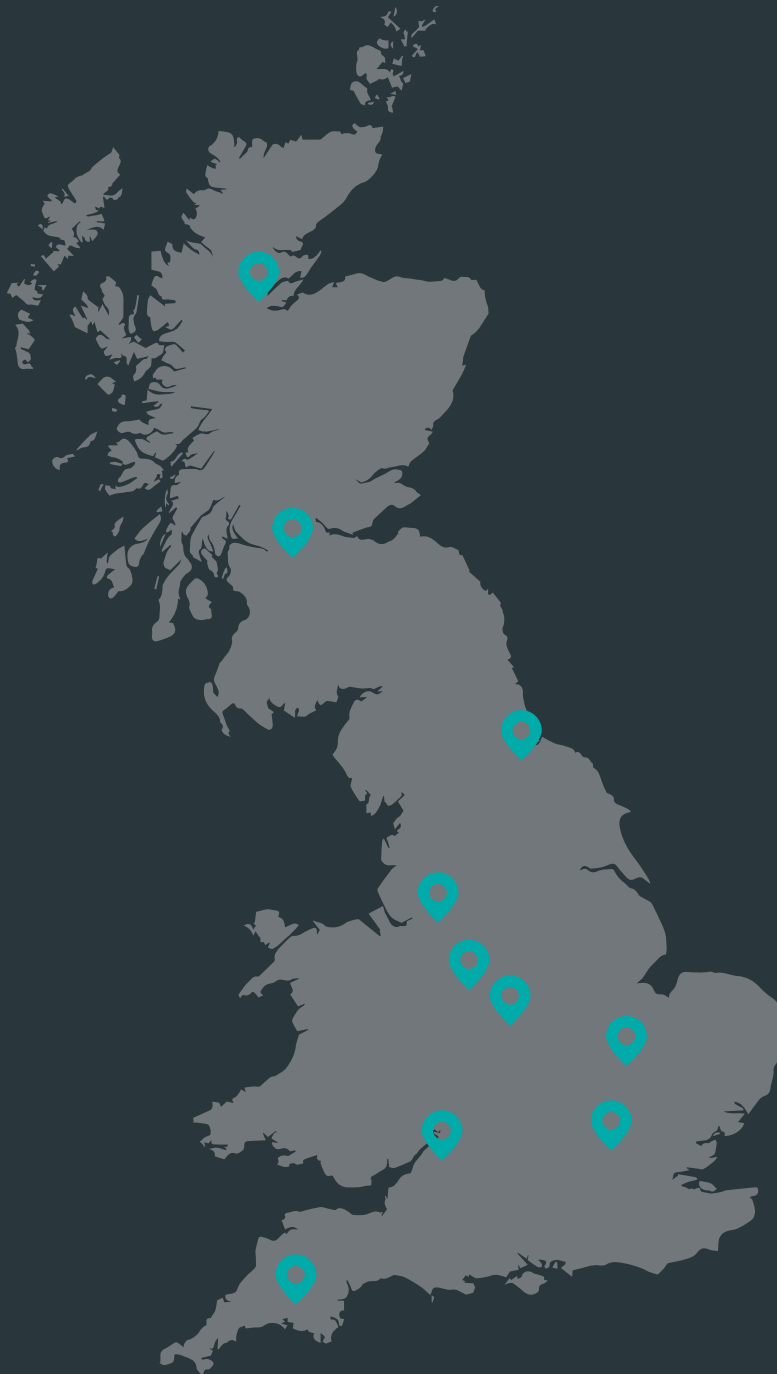
Book a
demo today

fleetCMD

fleetcmd.com



After sales support you can count on, wherever you are in the UK



AVONMOUTH HQ

T: 01179 820 123
Smoke Lane, Avonmouth
Bristol BS11 0YA

WARRINGTON

T: 01925 632 164
Athlone Road
Warrington WA2 8JJ

STONE

T: 01785 282 323
The Slope, Diamond Way
Stone ST15 0SD

STRATFORD

T: 01789 414 525
Snitterfield Rd, Bearley
Stratford-upon-Avon
CV37 0EX

CAMBRIDGE

T: 01785 282 323
Unit 3, Grange Farm
Babraham Road, Fulbourn
Cambridge CB21 5HR

LONDON

T: 01179 820 123
Victoria Road, Ruislip,
Middlesex HA4 0YS

CORNWALL

T: 01579 383 185
Moordown, St Ives
Liskeard PL14 3NA

DARLINGTON

T: 01325 638 703
Red Barnes Way
Darlington DL1 2BL

SCOTLAND

T: 01698 811 488
Ashley Drive, Bothwell
Glasgow, G71 8BS

INVERNESS

T: 01786 841 598
Tore, Muir of Ord
Inverness IV6 7SD