

# KOBELCO

SK380SRLC

Performance  Design

## SK380SRLC

■ Bucket capacity:

1.20 m<sup>3</sup>

■ Engine power:

200 kW / 2,100 min<sup>-1</sup>

■ Operating weight:

36,600-38,200 kg



Complies with the EU Stage V  
exhaust emission regulation

**We Save You Fuel**  
Achieving a Low-Carbon Society



SK380SR<sub>LC</sub>



# Performance Design

SK380SRLC of KOBELCO has realised a completely new value by harmonising PERFORMANCE – greater efficiency and productivity with an increased power and speed and DESIGN – operator-based operability and comfort, refusing to accept any compromises. In pursuit of unique and matchless machines which are unforgettable once you use them, KOBELCO will continue to rise to meet every challenge.



# PREMIER OPERATOR COMFORTS

## Air suspension seat

A GRAMMER seat is installed as standard equipment, which achieves excellent shock absorption and superior ride comfort.

## Air conditioner blowing from the rear

Air is blown against the operator's waist and the back of their head, offering more comfortable operation.

## Lever angles allow for comfortable operations

The operator can move the levers horizontally without twisting their wrist, which reduces the fatigue caused by the operations.



## Big Roomy Cab Interior

The cube design makes the most of straight lines, so the cab interior is more spacious. Operating space literally spreads out before the operator.

## Super-Airtight Cab

The high level of airtightness ensures a quiet, comfortable cabin interior, and keeps dust out of the cab.



## Low Vibration

Coil springs absorb small vibrations and high suspension mounts filled with silicone oil reduce heavy vibration.



# EXCELLENT LIFTING AND DIGGING PERFORMANCE IN NARROW SPACES

## Drawbar Pulling Force (SAE)

Excellent drawbar force lets you conquer rough terrain and slopes.

# 314 kN

## Lifting Capacity

# 12,390 kg

(Ground level over front @6.0m)

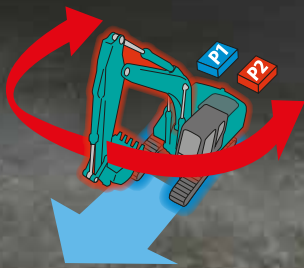
## Heavy Lift

High hydraulic pressure (Heavy Lift) means greater lifting power, at close radius, allowing for smooth and steady operation while moving heavy objects.



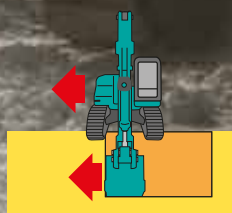
## Independent Travel

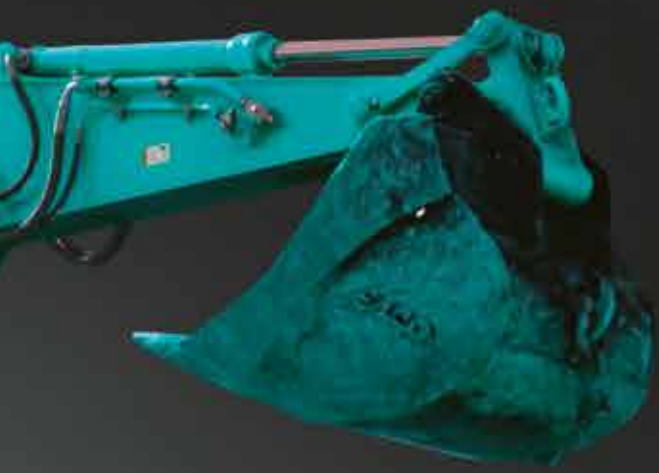
Automatic Independent Travel dedicates one hydraulic pump to travel and one to the attachment on a continuous basis, allowing for a smooth and constant movement speed even while swinging or using the boom or attachment. With Independent Travel, safely carrying a large pipe across a job site is a breeze.



## Swing Priority

Our exclusive system automatically and instantly delivers full swing power during combined operations. There's no need to switch modes to make quick work of jobs like side-digging and back-filling.





## Power Boost

When you need more power instantly, engage Power Boost to get 10% more power with no time limit.

### ■ Max. Bucket Digging Force

Normal: **189** kN

With Power Boost: **208** kN

### ■ Max. Arm Crowding Force

Normal: **126** kN

With Power Boost: **139** kN

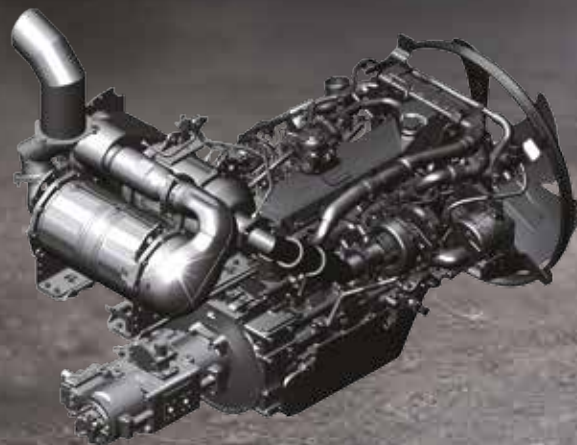


\* The picture shows 850mm shoe.850mm shoe is optional equipment.

## EXCEPTIONAL PERFORMANCE JUST GOT EVEN BETTER

### KOBELCO engines comply with Stage V Final emissions regulations

Hino engines are renowned for fuel efficiency and environmental performance, and KOBELCO has tuned them specifically for construction machinery. The high-pressure common rail fuel injection system, the variable-geometry (VG) turbocharger, and the exhaust gas recirculation (EGR) system reduce particulate matter (PM) while the large EGR cooler greatly reduces the formation of Nitrogen Oxide (NOx) gases.



Model: HINO J08 EYD

#### Engine output

**200kW/ 2,100min<sup>-1</sup>**  
(ISO14396 : without fan)





## Short radius design occupies only one lane of highway

In addition to excellent lifting and digging performance, the SK380SRLC has adopted the attachment mode for a variety of tasks such as breaking and operates effectively even in narrow spaces as a single highway lane. Moreover, the cab permits operators to concentrate on work in a wide and comfortable space.



# EASY MAINTENANCE



Ground level DEF tank



Ground level storage compartment access



Two-stage air filter



Engine maintenance

A special lower access step, near the engine, simplifies maintenance.



Remote fuel tank drain valve

# MULTI-DISPLAY IN COLOR

Brilliant colors and graphic displays are easy to recognize on the LCD multi-display in the console. The display shows fuel consumption, maintenance intervals, and more.



- 1 Analog-style gauges provide an intuitive reading of fuel level and engine temperature
- 2 Green indicates ECO mode selected or efficient operation in other modes
- 3 PM accumulation (left)/DEF level (right)
- 4 Fuel consumption/Rear-view camera
- 5 Digging mode switch
- 6 Monitor display switch

## One-touch attachment mode switch

A simple flick of switch converts the hydraulic circuit and flow amount to match attachments. Helpful icons let the operator confirm the proper configuration at a glance.



PM accumulation / Urea accumulation display



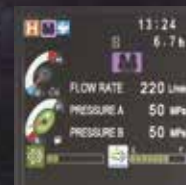
Fuel consumption



Maintenance



Breaker mode



Nibbler mode

# SAFETY ON FULL DISPLAY

## Standard Safety Camera System

Thanks to the cameras on the right, the operator inside the cab can confirm the safety of the worksite. The additional monitor makes it easy to confirm the situation. So, safety can be confirmed with the left and right camera, rear camera.



Rear view



Right view



Rear view



Right view

Left view

\* The picture shows 850mm shoe.850mm shoe is optional equipment.

# SAFETY AND CONVENIENCE IN EVERY CORNER



Rear camera



Left camera



Right camera

Standard rear and left-right side cameras



Rear-view mirror



Piping for Quick Hitch

A quick hitch hydraulic line, which speeds up attachment changes, is available.



Standard FOPS overhead cab guard

The standard FOPS guard can be tilted open for easy window cleaning. Meets standard FOPS, Top Guard Level II requirements. (ISO10262)



Rain visor and Cab 2 lights is fitted as optional



Standard LED lights

Bright LED lights ensure visibility even during night work.



Bluetooth<sup>®</sup> installed AM/FM stereo radio (DAB)

Bluetooth<sup>®</sup> installed to allow connections with smartphones and other devices.



Powerful automatic air conditioner

Also standard is an automatic air conditioner that maintains a comfortable interior environment all year around.



Handrail

The handrail on the step side allows easy access to the maintenance port on the upper arm.



Engine oil filter



Ground level maintenance

Fuel filter / Fuel filter with built-in water-separator



Enlarged fuel filter

The enlarged fuel filter with built-in water separator maximizes filtering performance.

Category	Description	SK380SRLC
		Standard boom
CAB	Cab (ROPS/FOPS Level II)	●
FRONT GUARD	Front guard	○
SEAT	Airsuspension seat + heater	●
SHOE	600mm steel shoe	●
	600mm double grouser shoe	○
	700mm steel shoe	○
	800mm steel shoe	○
	850mm steel shoe	○
BOOM	Standard boom (6.20m) with two LED lights	●
ARM	Standard arm (3.10m) with rock guard	●
	Short arm (2.40m) with rock ruard	○
PIPING	E&N&B piping + OHK + QH piping	●
CONTROL SYSTEM	Proportional Hand Control (for E&N&B piping)	●
C/W	Standard C/W (total 9000kg)	●
OTHER	Cab top LED work lights (two lights)	○
	Rain visor	○
	Additional track guides (two additional per side)	○
	Travel alarm	○
	Hydraulic oil VG46	○
Base machine equipment	Hydraulic oil VG68	○
	RAL color	○
	Base machine Hydraulic oil VG32	●
	Air-conditioner	●
	DAB+ radio (FM/AM & AUX & USB & Bluetooth* & hands free telephone)	●
	Harness for CAB four lights and CAB yellow flasher	●
	Harness for engine room light	●
	Rear view camera	●
	Right view camera	●
	Left view camera	●
	Refueling pump	●
	Lower frame guard	●
	Track guide (one per side)	●
	Top guard open / close function	●
	KOMEXS	●
	Without bucket	●

## Total Support for Machines with Network Speed and Accuracy



KOMEXS is a cellular based telematics system for receiving machine information. Manage your machines anywhere in the world using the Internet. Location, workload and diagnostic data aid business operations.

### Direct Access to Operational Status

#### Location Data

Accurate location data can be obtained even from sites where communications are difficult.

#### Fuel Consumption Data

Data on fuel consumption and idling times can be used to indicate improvements in fuel consumption.

#### Operating Hours

A comparison of operating times of machines at multiple locations shows which locations are busier and more profitable. Operating hours on site can be accurately recorded, for running time calculations needed for rental machines, etc.

#### Graph of Work Content

The graph shows how working hours are divided among different operating categories, including digging, idling, traveling, and optional operations (N&B).

### Maintenance Data and Warning Alerts

#### Machine Maintenance Data

Provides maintenance status of separate machines operating at multiple sites. Maintenance data is also relayed to KOBELCO service personnel, for more efficient planning of periodic servicing.

#### Security System

##### Engine Start Alarm

Sends a notification if the engine is started outside of pre-defined hours.

##### Area Alarm

Sends a notification if the machine leaves a pre-defined area.



# Specifications



## Engine

Model	HINO J08 EYD
Type	Four-stroke, liquid-cooled, direct injection diesel, turbo charged complies with EU Stage V exhaust emission regulation
No. of cylinders	6
Bore and stroke	112 mm x 130 mm
Displacement	7.684 L
Rated power output	188 kW/2,100 min <sup>-1</sup> (ISO 9249: with fan)
	200 kW/2,100 min <sup>-1</sup> (ISO 14396: without fan)
Max. torque	989 N·m/1,600 min <sup>-1</sup> (ISO 9249: with fan)
	1,017 N·m/1,600 min <sup>-1</sup> (ISO 14396: without fan)



## Hydraulic system

Pump	
Type	Two variable displacement axial piston pumps with a gear pump
Max. discharge flow	2 x 246 L/min
	1 x 21 L/min
	Extra gear pump 1 x 43 L/min
Relief valve setting	
Boom, arm and bucket	34.3 Mpa
Power Boost	37.8 Mpa
Travel circuit	34.3 Mpa
Swing circuit	29.0 Mpa
Control circuit	5.0 Mpa
Pilot control pump	Gear type
Main control valves	12-spool
Oil cooler	Air cooled type



## Swing system

Swing motor	One fixed displacement piston pump
Parking brake	Wet multiple plate
Swing speed	8.4 min <sup>-1</sup>
Swing torque	120 kN (SAE)
Tail swing radius	1,900 mm
Min. front swing radius	3,450 mm



## Attachments

Backhoe bucket and combination

Use	Backhoe bucket		
	Normal digging		
Bucket capacity	ISO heaped	m <sup>3</sup>	1.20
	Struck	m <sup>3</sup>	0.84
Opening width	With side cutter	mm	1,490
	Without side cutter	mm	1,300
No. of teeth			5
Bucket weight		kg	1,060
Combination	3.10 m standard arm		○
	2.40 m short arm		○

○ Recommended



## Travel system

Travel motors	Variable displacement piston, two-speed motors
Parking brakes	Wet multiple plate
Travel shoes	48 each side
Travel speed	4.6/2.8 km/h
Drawbar pulling force	314 kN (SAE)
Gradeability	70 % {35°}
Ground clearance	500 mm



## Cab & control

### Cab

All-weather, sound-suppressed steel cab mounted on the silicon-sealed suspension mounts and equipped with a heavy, insulated floor mat.

### Control

Two hand levers and two foot pedals for travel

Two hand levers for excavating and swing

Electric rotary-type engine throttle

### Noise levels

External	105 dB(A)
Operator	72 dB(A)



## Boom, arm & bucket

Boom cylinders	145 mm x 1,361 mm
Arm cylinder	150 mm x 1,675 mm
Bucket cylinder	130 mm x 1,208 mm



## Refilling capacities & lubrications

Fuel tank	350 L
Cooling system	35 L
Engine oil	28.5 L
Travel reduction gear	2 x 7.5 L
Swing reduction gear	7.4 L
Hydraulic oil tank	245 L tank oil level
	440 L hydraulic system
DEF/Urea tank	20.7 L



## Working ranges

Unit: m

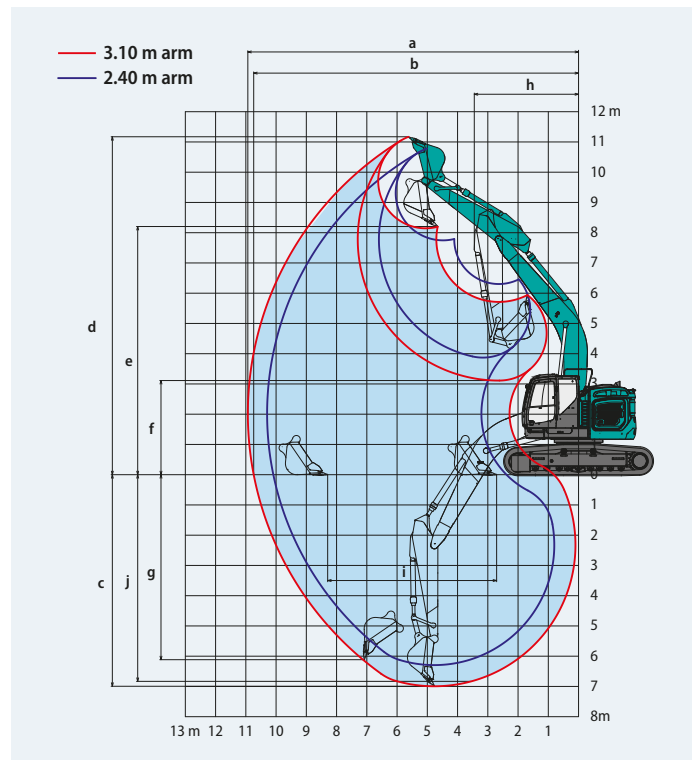
Range	6.20 m	
	2.40 m	3.10 m
a- Max. digging reach	10.30	10.93
b- Max. digging reach at ground level	10.09	10.74
c- Max. digging depth	6.29	6.99
d- Max. digging height	10.78	11.17
e- Max. dumping clearance	7.75	8.15
f- Min. dumping clearance	3.87	3.11
g- Max. vertical wall digging depth	5.69	6.11
h- Min. swing radius	3.56	3.45
i- Horizontal digging stroke at ground level	3.99	5.59
j- Digging depth for 2.4 m (8') flat bottom	6.10	6.83
Bucket capacity ISO heaped m <sup>3</sup>	1.20	

## Digging force (ISO 6015)

Unit: kN

Arm length	2.40 m	3.10 m
Bucket digging force	189 / 208*	189 / 208*
Arm crowding force	158 / 174*	126 / 139*

\*Power Boost engaged.



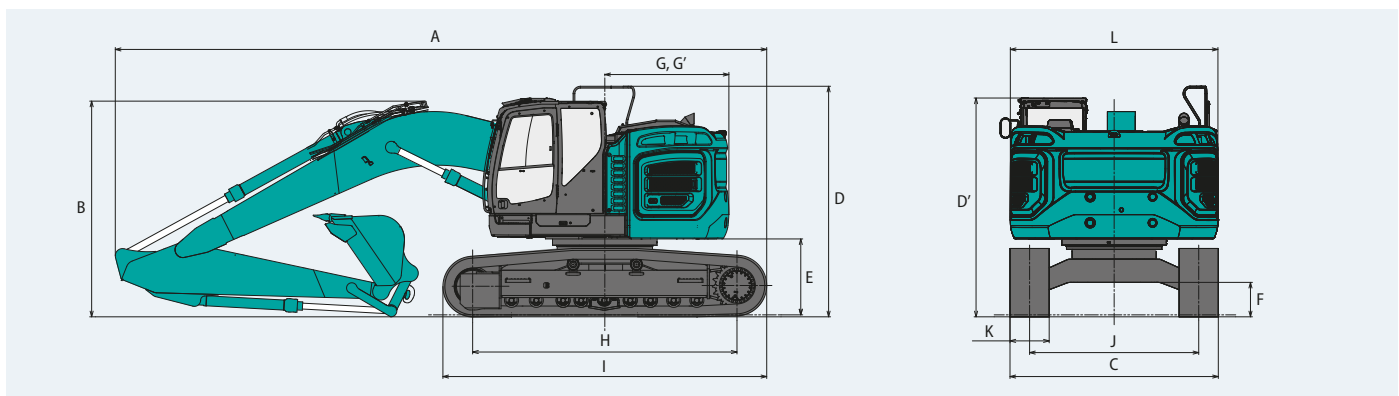
## Dimensions

Unit: mm

Arm length	2.40 m	3.10 m
A Overall length	10,100	9,980
B Overall height (to top of boom)	3,550	3,300
C Overall width	3,190**	
D Overall height (to top of handrail)	3,530	
D' Overall height (to top of cab)	3,350	
E Ground clearance of rear end*	1,160	
F Ground clearance*	500	

G Tail swing radius	1,900
G' Distance from center of swing to rear end	1,900
H Tumbler distance	4,050
I Overall length of crawler	4,960
J Track gauge	2,590
K Shoe width	600
L Overall width of upperstructure	3,180

\*Without including height of shoe lug \*\*600 mm shoe



## Operating weight & ground pressure standard boom

Boom: 6.20 m Arm: 2.40 m Bucket: 1.20 m<sup>3</sup> ISO heaped bucket

Type of Grouser		Triple grouser			Double grouser	
Shoes	mm	600	700	800	850	600
Ground pressure	kPa	68	60	53	50	69
Operating weight	kg	36,600	37,400	37,800	38,000	37,100

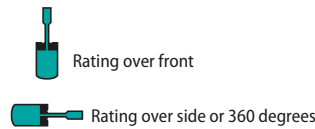
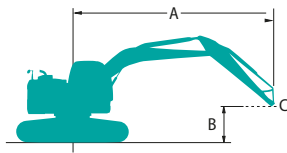
Boom: 6.20 m Arm: 3.10 m Bucket: 1.20 m<sup>3</sup> ISO heaped bucket

Type of Grouser		Triple grouser			Double grouser	
Shoes	mm	600	700	800	850	600
Ground pressure	kPa	69	60	53	51	70
Operating weight	kg	36,800	37,600	38,000	38,200	37,300

# Lift Capacities

# SK380SRLC

SK380SRLC



A - Reach from swing centerline to arm top

B - Arm top height above/below ground

C - Lift point

Relief valve setting: 37.8 MPa

SK380SRLC		Arm: 2.40 m		Bucket: without		Counterweight: 9,000 kg		Shoe: 600 mm				
B	A	3.0 m		4.5 m		6.0 m		7.5 m		At Max. Reach		Radius
9.0 m	kg									*8,950	*8,950	5.04 m
7.5 m	kg					*8,630	*8,630			*7,680	7,080	6.72 m
6.0 m	kg			*10,240	*10,240	*9,010	8,450	*8,510	5,870	*7,230	5,540	7.74 m
4.5 m	kg			*13,030	12,370	*10,150	8,040	*8,840	5,720	*7,150	4,780	8.36 m
3.0 m	kg					*11,540	7,550	9,330	5,500	*7,340	4,410	8.67 m
1.5 m	kg					*12,610	7,150	9,090	5,280	7,310	4,290	8.71 m
G.L.	kg			*15,460	10,410	12,440	6,940	8,940	5,150	7,530	4,390	8.47 m
-1.5 m	kg	*11,100	*11,100	*16,530	10,460	12,390	6,890	8,920	5,130	8,260	4,790	7.94 m
-3.0 m	kg	*18,730	*18,730	*14,550	10,650	*11,150	7,010			*8,880	5,720	7.03 m
-4.5 m	kg			*10,840	*10,840					*8,260	8,180	5.58 m

SK380SRLC		Arm: 3.10 m		Bucket: without		Counterweight: 9,000 kg		Shoe: 600 mm						
B	A	3.0 m		4.5 m		6.0 m		7.5 m		9.0 m		At Max. Reach		Radius
9.0 m	kg					*5,380	*5,380					*4,790	*4,790	6.10 m
7.5 m	kg					*7,420	*7,420	*4,530	*4,530			*4,240	*4,240	7.53 m
6.0 m	kg					*7,960	*7,960	*7,600	5,960			*4,030	*4,030	8.45 m
4.5 m	kg	*16,910	*16,910	*11,300	*11,300	*9,180	8,170	*8,110	5,770	*4,280	4,250	*3,990	*3,990	9.03 m
3.0 m	kg			*14,640	11,590	*10,700	7,640	*8,860	5,500	*6,770	4,140	*4,090	3,910	9.31 m
1.5 m	kg			*17,010	10,690	*12,030	7,180	9,070	5,250	6,910	4,020	*4,330	3,800	9.35 m
G.L.	kg			*17,670	10,320	12,390	6,870	8,860	5,070	*6,450	3,940	*4,770	3,860	9.13 m
-1.5 m	kg	*11,420	*11,420	*17,140	10,250	12,250	6,750	8,770	4,990			*5,530	4,150	8.64 m
-3.0 m	kg	*18,020	*18,020	*15,650	10,370	*11,810	6,790	8,840	5,050			*6,960	4,800	7.82 m
-4.5 m	kg	*17,300	*17,300	*12,830	10,690	*9,480	7,040					*8,160	6,290	6.54 m

- Notes:
- Do not attempt to lift or hold any load that is greater than these lift capacities at their specified lift point radius and heights. Weight of all accessories must be deducted from the above lift capacities.
  - Lift capacities are based on machine standing on level, firm, and uniform ground. User must make allowance for job conditions such as soft or uneven ground, out of level conditions, side loads, sudden stopping of loads, hazardous conditions, experience of personnel, etc.
  - Bucket pin attachment point defined as lift point.
  - The above lift capacities are in compliance with ISO 10567. They do not exceed 87% of hydraulic lift capacity or 75% of tipping load. Lift capacities marked with an asterisk(\*) are limited by hydraulic capacity rather than tipping load.
  - Operator should be fully acquainted with the Operator's and Maintenance Instructions before operating this machine. Rules for safe operation of equipment should be adhered to at all times.
  - Lift capacities apply to only machine as originally manufactured and normally equipped by KOBELCO CONSTRUCTION MACHINERY CO., LTD.

Note: This catalogue may contain attachments and optional equipment that are not available in your area. And it may contain photographs of machines with specifications that differ from those of machines sold in your areas. Please consult your nearest KOBELCO distributor for those items you require. Due to our policy of continuous product improvements all designs and specifications are subject to change without advance notice.

Copyright by **KOBELCO CONSTRUCTION MACHINERY CO., LTD.** No part of this catalogue may be reproduced in any manner without notice.

## KOBELCO CONSTRUCTION MACHINERY EUROPE B.V.

Veluwezoom 15  
1327 AE Almere  
The Netherlands  
<https://www.kobelcocm-global.com/>

Enquiries To: