

May 2015

**CONFIDENCE IN
DEMOLITION**

page 8-9

**PLANTWORX
SPOTLIGHT**

page 10

**THE NEW BLUE
CAR EATING
MACHINE**

page 6-7

**FIRST HL760-9A
WASTE HANDLER
IN THE UK**

page 4-5

**PRONAR MOBILE
TROMMEL HITS
THE UK**

page 13

About us

Molson was founded by Jonathan Wilson and Robin Powell in 1996. Bob Barnett joined in 2005 as chairman of the Molson Group. Currently Molson stands as one of the largest suppliers of Korean and Japanese built excavators in Europe and continues to source a wide range of equipment including dump trucks, dozers, demolition rigs and wheeled loaders. In 2010 Molson became Hyundai's biggest dealer in the whole of Europe and has now sold over 1,500 new Hyundai machines. We are ideally situated at the intersection of the M4 and M5. New and prospective customers are always welcome to visit us – we would love to show you around. Molson represent the following major international brands, all with a reputation for top-of-the-line quality:



BRISTOL (HEAD OFFICE):
TEL: +44 (0) 1179 820 123
FAX: +44 (0) 8450 179 516
POST: MOLSON GROUP LTD, SMOKE LANE,
 AVONMOUTH, BRISTOL, BS11 0YA
WEB: MOLSONGROUP.CO.UK
EMAIL: INFO@MOLSONGROUP.CO.UK

NC DUMPERS GO DOWN A TREAT WITH PLANTFORCE CUSTOMERS

Somerset based plant hire firm boosts fleet with 40 new site dumpers

Plant hire company Plantforce has seen demand for its fleet of Molson supplied dumpers from NC Engineering soar on the back of positive reports over their on-site performance.

The south west based hirer has depots in Bristol, Bridgewater and Exeter and has witnessed huge growth in demand for its services. In a move to meet that demand the company has ordered 40 site dumpers across the full NC range through Molson and those machines are already earning rave reviews from site.

Sam Mercer, Plantforce Depot manager, said: "We have had nothing but glowing reports for the NC dumpers. They are working on a wide variety of sites and all of our customers have mentioned how impressed they have been with their performance."

According to Sam his customers have been particularly impressed

with the stability of the dumpers on slopes and uneven ground as well as highlighting their manoeuvrability and power.

He said: "They are out on sites ranging from railway projects to housing schemes and industrial projects. Customers have mentioned their reliability, torque and tight turning circle among other things. For Plantforce the build quality is important and that of the NC dumpers cannot be faulted."

Manufactured at the NC Engineering base in Northern Ireland the machines are produced to exacting standards and are proving more than capable of standing up to the rigours of construction site work. Available in a range of payload capacities from 1 tonne through to 10 tonnes the dumpers also feature a raft of tip options. Please contact your Molson area sales manager for further detail.



D JONES PLANT HIRE TURN BLUE

Molson is pleased to welcome a new customer to the business: Denbigh based company D Jones Plant Hire. The North Wales company has taken three Kobelco SK210's to add to its fleet, following work from our area sales manager Andy Wilkinson. He said: "The team at D Jones Plant Hire have used competitor machines

in the past as well as Kobelcos. They recognised the value for money that Kobelcos offer as well as their history and strong reputation in the market, particularly with Molson opening of our Warrington depot and the level of service we could deliver. I am sure this will be just the start of a fantastic relationship."

WARRINGTON OPEN DAY WAS A BIG HIT WITH CUSTOMERS



Customers, clients and friends old and new joined the Molson team at an event to mark the official opening of our new Warrington depot.

The open day, held shortly before Easter, attracted customers from across the North Midlands, North West, North East and beyond as they came to view our new centre and check out the facilities we have available there.

Area sales manager Andy Wilkinson said: "It was a fantastic day.

Everyone we spoke to was really positive and impressed about the setup we have here and I think it has

helped convince some people that we will be more than capable of providing Molson's own exacting standards of service to customers across the regions we will be covering from here."

More than 50 representatives of the area's plant businesses dropped into the Warrington depot throughout the day, taking the opportunity to meet up with our staff, look over the range of machines we have available to clients and cast an eye over the workshops and servicing yard. Some were more than happy to extend their existing fleet of machines

by purchasing plant on the day. Manchester based DWM Plant took a 6tonne NC dumper to add to the Kobelco SK140 zero slew machine it already had on order. Molson managing director Jonathan Wilson has been instrumental in setting up the Warrington centre and was delighted with the day. He said: "It was great for people to be able to come and see what we can offer. It is important that they realise that this is a long-term venture for us. We are here for good."

HYUNDAI HEAVY INDUSTRIES NAMED AS THE BRITISH SIDECAR SERIES SPONSOR

Hyundai Heavy Industries in association with Molson are pleased to be the series sponsor of the British Super Bike support series, the British Sidecar Championship.

The sponsorship agreement will see the Hyundai (HHI) and Molson brand exposed to over 10 million people through trackside advertising boards and signage on all sidecar teams farings.

Molson now has the ability to take customers to all this year's race weekends with access all areas passes to share in the adrenalin filled spectacle that a race event has to offer.

In addition to sponsoring the series, Molson have also sponsored the WPS AOS Sidecar Team, who have started the season in sensational form, currently sitting top of the championship.



MERCIAN RECYCLING LAND T HANDLER SPEC LOADING SHO

One of Molson Group's customers has been the first to take delivery of the latest waste handling specification wheeled loader from plant manufacturer Hyundai. Birmingham firm Mercian Recycling has added the Hyundai HL760-9A Waste Handler to its fleet of machines working at its base in Kings Norton. The team at Mercian is the first to take the wheeled loader which has been specifically designed by the engineers at Hyundai to work in the waste handling sector.

Molson area sales manager James Dodkins welcomed the launch of the new machine and labelled it a significant addition for the waste handling sector.

He said: "This is a machine that has been specifically developed for the waste handling industry and reflects all the advantages offered by being part of the Hyundai range. It offers a host of advantages over competitor machines and with the quality of after sales service that Molson is able to offer I am sure the HL760-9A Waste Handler will be perfect for the team at Mercian."

Weighing in at just over 20 tonnes the HL760-9A Waste Handler is slightly heavier than a standard HL760-9A machine, thanks largely to all the extra features it has that help make it a winner for handling waste. These include heavy-duty axles which provide excellent performance and durability in the typically heavy load and frequent braking conditions of a waste handling station as well as fuel tank guards that protect and keep debris away from the fuel tank. These bolt-on covers improve the safe working of the machine and also allow easy access for cleaning and maintenance.



Engine Details

Make/Model: Cummins QSB6.7

Type: Stage IIIB water-cooled, turbo charged, charge air cooled diesel.

Gross power: 225HP
(168kW/2100rpm)

Net power: 222HP (166kW/2100rpm)

Max torque: 97Kg-m/1500rpm

And the protection measures against damage or ingress of waste materials don't stop there. To reflect the testing environment these sorts of machines will be run in, the engineers at Hyundai have added a heavy duty rear grill guard that provides additional protection to the engine grill. This guard is hinged to allow easy access to the airborne debris screen and cooling cores. Front and rear window guards which can be easily removed or replaced are available to protect the operator

THE FIRST HYUNDAI WASTE MODEL IN THE UK



General Dimensions

Overall length on ground: 8.89m

Overall length on carry: 8.75m

Overall height (fully raised): 6.21m

Overall width with bucket: 2.9m

Reach – full lift: 1.41m

Dumping clearance at max height: 3.29m

Bucket type: general purpose bolt-on cutting edge.

when working in particularly tough waste applications and the experts at Hyundai have also provided protection to the attachment hoses which will prevent debris from reaching underneath the base and sides. There are spring guards which are provided to protect the hose line for the boom and bucket cylinders from debris damage. Hitch area guards provide similar protection to the hydraulic lines and other components by enclosing the frame and reducing debris damage entry to

the transmission and engine compartments. Steering cylinder guards also prevent damage from debris.

Molson Group managing director Robin Powell welcomed the new machine.

He said: "This is the perfect loader for the waste handling sector. It is an area that is important to us at Molson and we are pleased to be able to offer such a great machine to our specialist customers."

Call the experts

Head Office

+44 (0) 1179 820 123

Rick Grove - Bristol

+44 (0) 7887 880 055



Simon Johnson-Taylor
- Bristol

+44 (0) 7976 620 414



Stuart Butler - London
07899 664 535



Luke Mercer -
South Wales
07786 330 022



Dan Guibarra -
South Coast
07796 773 355



Tom Wilson - South West
07789 937 793



Andy Wilkinson -
Northern
07500 334 413



James Dodkins -
Midlands North
07921 149 398



Peter McGuinness -
Crushing & Screening
07876 201 102



Dominic McCann -
South East & South
London
07500 334 402



Martin Brain -
Midlands South
07717 446 644



KOBELCO CAR DISMANTLING

Kobelco's latest offering is a prime example of how the Japanese manufacturer is always looking to develop its machines to benefit end users.

Waste handling and recycling has developed into a key industry sector for plant manufacturers in recent years.

Legislation designed to encourage the re-use and repurposing of a host of materials has turned products previously destined for landfill into valuable commodities.

Now demand for those products such as recycled and reclaimed timber, steel, aggregates and top-soil has rocketed and the markets have developed and matured to help accommodate that spiralling demand. Processing these materials is a difficult job and requires robust, specialist plant to help.

Our Japanese partner Kobelco has a long history of working within the recycling sector, particularly in the car dismantling sector in its home country. In response to an increase in demand from the European car dismantling and scrap metal market the giant has recently launched its latest piece of specialist equipment.

The Kobelco SK210D car dismantling machine has been specifically designed and refined by its engineers over many years to meet all the demands of this specialism while delivering the same fuel-sipping performance expected from a Kobelco machine. Whereas the task of dismantling a vehicle was once a labour intensive pastime requiring workers wielding power tools and gas cutters, the new SK210D is able to carry out the same workload with a single operator. It is also able to handle vehicles of all sizes including cars, buses and

tractor units.

This increased efficiency leads to a hike in productivity while at the same time increasing safety by eliminating exposure to the most difficult and dangerous of cutting operations. The SK210D features clamp arms that hold the vehicle while the main nibbler attachments help cut, sort and munch their way through the body. These clamp arms are capable of securely holding items of up to 1.75m in height and the 'S' shape arms feature special teeth at the end of the top face which act as a hook to help break, bend and rip objects quickly and safely.

A choice of two specialised attachments are available with the SK210D machine with the vehicle dismantling nibbler boasting a powerful grab, high cutting force and high rotational torque for ripping. The optional multi-dismantling nibbler has a pointed shape and is more suited to performing small-scale separating and sorting actions.

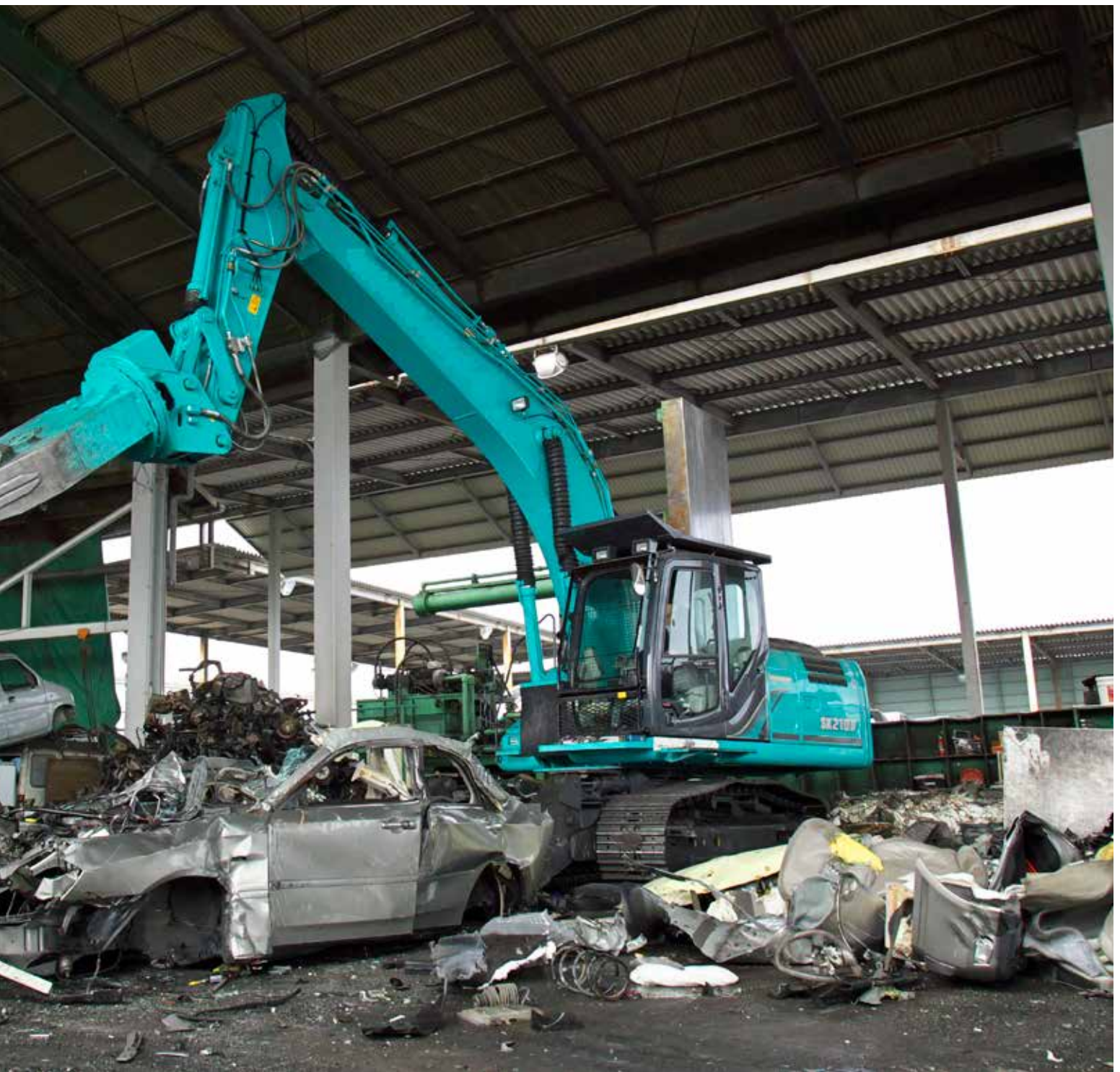
And in common with the rest of the Kobelco SK210 range the SK210D offers incredible fuel efficiency savings, particularly when working within the engine's new 'ECO' work mode which will result in fuel efficiency savings of as much as 18% on previous standard excavators. Kobelco claims that its latest environmental engine and energy saving hydraulic system helps the SK210D achieve the highest energy saving performance in its class with the 'ECO' work mode helping reduce not just fuel consumption but also carbon dioxide emissions.

Molson managing director Robin



Powell said: "The Kobelco SK210D is a fantastic machine, perfectly suited to the work its users need it to carry out. Like all Kobelco machines it is extremely fuel efficient and is a great example of the innovative work their engineers and designers deliver."

ER TEARS INTO THE UK



General Dimensions

Operating weight: 26.8tonnes
Overall length: 12.26m
Overall width: 3.05m
Overall height: 3.63m
Tail swing radius: 2.86m

Working Ranges

Min swing radius: 3.54m
Working height —clamp arm: 1.75m
Operating width — clamp arm: 1.04m

With attachment:	KV800PR	KV720PR
Max vertical range:	9.01m	8.96m
Max operating height	5.94m	5.83m

Engine Details

Type: Hino JO5E-TJ
Rated power output:
117kW/2,000min-1
Fuel tank capacity: 370litres
Relief valve setting: 34.3MPa
Hydraulic oil tank: 230litres

DSM SHOW CONFIDENCE IN MOLSON WITH ANOTHER INVESTMENT IN MACHINES AND ATTACHMENTS

A dynamic demolition firm that requires a versatile and reliable supplier, DSM continue to grow their business using machinery from Molson

Birmingham based demolition specialist DSM Demolition Group has earned a reputation for delivering quality, cost effective, innovative and safe demolition and decommissioning schemes in the years since its inception. First established in 1988 DSM has gone on to develop strong business relationships with repeat clients thanks to the quality of its service. Operating across a broad range of sectors with clients including local authorities, government departmental bodies, health trusts, utility companies, developers and main contractors the firm works across the UK and abroad.

Over the years Molson Group have been honoured to supply the team at DSM with a range of equipment to suit their burgeoning business.

That relationship has seen the company take a raft of new machines recently to help the specialist on some of its major projects, including the demolition of the former Central TV studios in the centre of Birmingham to make way for the £400million 'Arena Central' mixed use development.

The studios were the home of anarchic 1970's children's TV show Tiswas but there is nothing chaotic about the work the DSM team is doing on the site.

It is using its fleet of machines to help crunch and crack its way through the mass of steel and reinforced concrete that makes up the site in the centre of Birmingham. Over recent months Molson has been



able to supply a range of demolition specification machines to DSM including nine Hyundai R300LC-9A's, one R220LC-9A and five Hyundai R380LC-9A tracked excavators with an additional two R27Z-9 mini excavators and a R520LC-9A complete with a Kocurek 26m high reach boom.

These Hyundai excavators have been followed up with an Ammann ARX26 Tandem Roller and an NPK X-4A Hydraulic Cracker attachment. Molson area sales manager Stuart Butler has seen the deal through which pushes the total number of machines and pieces of equipment supplied to DSM Demolition by us to over 40 in the last few years. Stuart said: "We have a very good

working relationship with DSM Demolition. We have been able to supply the team with the number of machines they require but we have also put a strong emphasis on the after sales service we deliver. We are proud to be associated with the work the DSM team is carrying out and are sure that we can continue to be its plant supplier of choice."

Molson joint managing director Robin Powell said: "DSM is one of the demolition and decommissioning sector's real success stories. We have been fortunate enough to be able to work with them over the years and help meet the plant supply requirements for such a busy, dynamic company."

RYE POWER AHEAD WITH A NEW HIGH REACH HYUNDAI

Working with high reach specialists Kocurek Excavators, Molson deliver a machine ready to take on the toughest of jobs for Hertfordshire based Rye Demolition

Molson has supplied Hertfordshire based Rye Demolition with a specialist piece of equipment perfect for the firm's challenging demolition projects.

The team at Rye Demolition has taken a demolition specification Hyundai R235LCR-9A base machine fitted with a 16m long-reach demolition arm from specialist manufacturer Kocurek Excavators. The Rye team took delivery of the zero tail swing machine and the 16m arm shortly before Easter and have been working them on a site in NW London.

The machine is the latest in a long list of demolition specification equipment we have supplied to the Rickmansworth firm in recent years. It took nine machines from Molson last year and we have already extended the Rye Demolition fleet by a further six machines this year by supplying two Hyundai R140LC-9A excavators, an RC210LC-9, an R145LCD-9 and an R300LC-9A machine as well as the Hyundai R235LCR-9A excavator.

Area sales manager Stuart Butler helped advise Rye Demolition over which machines would prove best suited to their ongoing demolition workload.

He said: "Rye Demolition is a proactive, forward thinking company that has made great strides in the demolition sector in recent years and we have been able to supply it with the machines that have helped the company develop. These latest additions to its fleet will help Rye Demolition continue its great success."

The team at Rye Demolition has

considerable experience in all types of demolition projects together with the soft strip of city centre office blocks. With an ever expanding list of major clients and repeat business it operates mainly across the south of England and but will travel nationwide for a major project.

It prides itself on providing a safe and secure working environment for its operatives, staff and the general public. All of the company's site supervisors, demolition operatives and machine operators have received training to a recognised standard and have obtained CCDO

(Certificate of Competence for Demolition Operatives) and CPCS (Construction Plant Certification Scheme) cards to fully equip them to successfully carry out their duties. Molson managing director Jonathan Wilson said: "We are delighted that Rye has once again chosen Molson to help it add to its fleet of machines. The decision not only underlines the quality of the Hyundai machines but also the quality of service we are able to deliver to our customers and the strength of the relationship between our two companies."



REDGATE HOLDINGS TREAT WASTE IN STYLE

Waste management company Redgate Holdings has taken two Kobelco SK210 machines in a milestone first deal with Molson. Based in Manchester the firm has ordered the two machines to boost its fleet which help it deliver its environmental and waste management services across the region.

Its twin Kobelco's are currently being fitted out to a waste handling specification at the Molson workshop but will soon be delivered to site, ready to bring the fuel and operational efficiency of which they are famed to the team at Redgate.

Molson area sales manager Andy Wilkinson said: "The machines are having the waste spec side skirts and reversing fans fitted but will make the perfect addition to the Redgate fleet. It is great to be able to supply a new Molson customer with machines of this calibre which I am sure will be the first in a long business relationship between us both."



meet the experts:

||| MOLSON |||

PLANTWORX: MOLSON SET TO STEAL THE SHOW *2-4th June*

Molson are set to show up in force across our partners' stands

Molson will have a strong presence at this year's Plantworx exhibition being held at Bruntingthorpe Aerodrome in Leicestershire (LE17 5QS) between 2nd and 4th of June.

Our directors and area sales managers will all be available at the show to talk with friends and customers old and new through the latest additions to the range of machines on offer.

Hyundai will be exhibiting its new generation of machines on its stand, giving UK debuts to its R17Z-9A mini excavator, its HX300L and HX260L heavy line excavators, the R160W-9A wheeled excavator and the HL960 and HL970 wheeled loaders.

Hyundai demonstrators will be putting the new HL960 wheeled loader and the new HX260L heavy line excavator to the test in Hyundai's demo arena. The 2.6 tonne mini R25Z-9A excavator, the 8 tonne midi R80CR-9A excavator, the 14 tonne R140LC-9A excavator, 12 tonne R125LCR-9A excavator and the 18.5 tonne HL760-9A waste handler spec

machine will also be available for viewing on the Hyundai stand number 14 & 15B2.

Our site dumper supply partner NC Engineering will be exhibiting its nine-strong product range that is claims can outperform the competition with their unique features.

Its machines have already been well received by our customers and have been described as being operator friendly, rugged, powerful and reliable with an increased focus on safety and ergonomics. They are available for viewing at the NC Engineering stand number 11C2.

Kobelco will be showing examples from its range of tough, fuel efficient excavators at this year's Plantworx. Its latest SK210 excavator has proved popular with Molson customers since its launch and will add to a fleet of machines that offer great performance and real value for money. The range will be available for view on the Kobelco stand number 12F2.

TIM BURBIDGE PLANT HIRE RACKS UP HALF A DOZEN KOBELCOS

Somerset based plant hirer and civil engineering contractor Tim Burbidge Plant Hire has boosted its fleet with six new Kobelco machines.



The Bridgewater firm has taken six new machines that will be put to work through its hire fleet and on a host of utility and infrastructure projects throughout the surrounding area. Under a deal brokered by Molson area sales manager Tom Wilson, six new Kobelco excavators have been delivered to the specialist. This order includes one SK210LC-9 crawler as well as three SK140SRLC-3 machines and a further two SK85MSR-3 excavators.

According to Tom the Kobelco machines are ideal for the type of work that the Burbidge fleet will be undertaking thanks to their fuel economy and build quality. He said: "These machines are very strong and perfectly suited to the rental market and the type of work they will be carrying out for the utility companies. They are very fuel efficient which offers fantastic operational savings and are

extremely robust. This means they are able to hold a high residual value."

This latest order from Tim Burbidge Plant Hire is its first for Kobelcos since Molson started offering the Japanese machines at the turn of the year. It is reward for the hard work Tom has put in over the last 12-months understanding the customer's requirements and making sure they have the machine that best fits their circumstances.

Tom said: "The company used to use Kobelco machines until a few years ago. It has taken a lot of hard work to welcome the firm back to Molson and I am sure the quality and efficiency of our service will more than convince the team at Burbidge that it has made the right choice. Tim and I have forged a good working relationship and I am sure that will continue."

HILL & SONS GROW THE FLEET WITH A KOBELCO MINI

Longstanding Molson customer RE Hill & Son has added a second Kobelco machine to its fleet with the purchase of a SK17 zero swing excavator.

The latest addition follows on from the success of a 3tonne SK30 excavator the Dundry, North Somerset based contractor took from us recently.

Area sales manager Luke Mercer brokered the deal and says that the reliability, fuel efficiency and build quality of the Kobelco machines persuaded customer Michael Hill that they offered superb value for money.

Luke said: "The Kobelco machines are a premium product. The team at RE Hill & Son have taken the Kobelco machines having run competitor products in the past. These machines are ideally suited to the type of work the company carries out."



Introducing:
JM PRONAR
mobile trommel
screens, now available
in the UK!

Material
separation
for:

Compost

Wood

Biomass

Soil

Coal

Aggregate

Municipal

Skip Waste

& Many More

- 2 years warranty (2000 hours)
- Interchangeable drums with Doppstadt machines
- 4 models available
- Demo's available

Starting from only
£393 per week*

*All figures are subject to credit approval and rates may change prior to drawdown.

*Figures provided are based on a 20% +VAT deposit over 60 months – Hire Purchase.

*Weekly figures are provided solely for illustration purposes and additional administration fees may apply.

|||| MOLSON ||||

AUTHORISED UK PRONAR DEALER

WEB: MOLSONGROUP.CO.UK

E: INFO@MOLSONGROUP.CO.UK

TEL: +44 (0) 1179 820 123

FAX: +44 (0) 8450 179 516

POST: MOLSON GROUP LTD, SMOKE LANE, AVONMOUTH,
BRISTOL, BS11 0YA



CGCS (Midlands) Ltd.

SOLE UK PRONAR DISTRIBUTOR / IMPORTER

WEB: CGCSMIDLANDSLTD.CO.UK

E: D.JENKIN@CGCSMIDLANDSLTD.CO.UK

TEL: +44 (0)1522 779 028

FAX: +44 (0)1522 779 028

POST: C.G.C.S. MIDLANDS LTD., 31 HIGH ST, EAGLE,
LINCOLN, LN6 9DG

MOLSON GROWS AGAIN: ENTERING THE TROMMEL MARKET WITH NEW PARTNERSHIP

Molson is delighted to announce it has teamed up with trommel manufacturer Pronar to become the dealer for its environmental products.

Under an exclusive agreement Molson will be covering Wales and the South West, Southern England, Greater London, Herefordshire, Worcestershire, Shropshire, Gloucestershire and Oxfordshire. The move will boost the range of equipment we can offer our customers and provides a perfect fit alongside our existing waste handling and sorting plant.

Available in four different sizes, the Pronar trommel range includes the MPB 14.44 which boasts a trommel drum length of 4400mm and a width of 1400mm; the MPB 18.47 with its 4700mm long, 1800mm wide drum; the MPB 20.55 with a 5500mm long, 2000mm wide drum and the MPB20.72 machine which boasts a 7200mm long, 2000mm wide drum. Thanks to its solid design and a simple principle of operation the Pronar mobile trommel screeners are perfectly suited for work with various materials such as; soil, compost, municipal waste, coal, aggregates and biomass.

The sorting trommel can be made according to customer requirements – round or square holes, different plate thicknesses, etc. while the overall machine dimensions allow travel over public roads without applying for special permits. And troubleshooting is easy on the Pronar machines. Wide-opening guards provide quick and easy access to the motor on a rotating frame, ensuring good access to the drive unit, charging hopper and the hydraulics. Peter McGuinness, Molson crushing and screening manager welcomed the move.



Model: 18:47

He said: "These Pronar trommels are completely new to the UK market but are fully compatible with the current market leading machines. This means that customers will find that the spare drums they may have for their existing machines are interchangeable in every way with the Pronar trommels. It is incredibly quick to set up and be up and running sorting material within 15minutes of arriving at a site."

And already the machines have proven popular. Peter has worked alongside customer Countrystyle Group offering advice on the ideal equipment as it has taken one of the Pronar machines working on a site in Sevenoaks, Kent.

Peter said: "We think the Pronar trommel is the perfect machine for Countrystyle Group. The waste handling business will be a massive market for these machines but they are more than capable of working in other areas. Top soil and compost production and sorting are other areas we think they will be well suited but they will also be perfect for businesses in the wood shredding and biomass sectors."



Model: 14:44



Model: 20:55



Model: 20:72

For further information on the exciting new range of Pronar trommels please contact Peter McGuinness on:
T: +44 (0) 7876 20 11 02
E: pmcguinness@molsongroup.co.uk

Opinion

Our business is of course extremely international in nature:

We have just returned from Intermat, which hosted huge crowds with over 100,000 attendees. Our partners Hyundai (of Korea) and Kobelco (of Japan) had large and impressive stands showcasing their extensive ranges including new models, which will soon appear in the UK (including Plantworx next month):

We look forward to seeing many of you at Plantworx: not just to catch up but also to show you the new "HX tier 4 final" Hyundai's, and the new Kobelco models which include several minis and the larger offset-boom excavators.

The UK market is bucking the international trend, with reasonable growth compared to a number of flat economies elsewhere in the EU. At home our political classes have finally all recognized, in their General Election talks, an understanding that a healthy construction sector is essential... and in particular that new house building is centre-stage for increased government support. I am particularly pleased to announce that in April we sold our 250th Kobelco – the pent-up demand from customers who loved this brand in the past was perhaps greater than even we had expected.

Molson trading is breaking all-time records: in February we had monthly sales of £7.2 mill, which included 70 new excavators, and for the six months to March 31st, 2015 our turnover was up 50% over last year – which was itself a record. Molson will have a large team at Plantworx and we look forward to seeing you there.



Bob Bonello

PEGRAM ADDS NEW ARGO CRUSHER AS ORDER BOOK FILLS



The versatility of the Keestrak OM crushers has seen Essex based customer RM & TM Pegram take a machine from Molson for use on its projects.

The Chelmsford based company specialises in processing construction and demolition waste and it has seen demand for its services rise as the industry has emerged from the recession in recent years.

With its easily adjustable 1000mm wide jaw and high clearance within the chamber the machine is perfectly suited to dealing with the heavy duty steel reinforced concrete the Pegram team is likely to encounter on site.

Molson crushing and screening sales manager Peter McGuinness worked

with the Pegram team and recommended the Argo machine. With its low 30 tonne transport weight, height of 3.1m and width of 2.5m the machine is transported from site to site on a standard low loader trailer. It is capable of being operational within 15 minutes and is ideally suited to the type of city centre and urban projects that Pegram specialises. Peter said: "The jaw versatility is second to none and can be opened or closed while the machine is running if material size changes or it becomes clogged. This means that it is operating for greater lengths of time and so productivity is increased."

MOLSON TEAM GROWS IN EXPERIENCE AND NUMBERS

Graham Ward has joined the Molson team as depot supervisor following the opening of our new centre in Warrington.

Graham has a long history in the heavy plant world having served his apprenticeship and worked as a plant fitter for more than two years.

Dominic McCann has also joined the sales team to cover the South East of England and South London.

Dominic has joined Molson after over



six years with Komatsu covering the South East region.

Martin Brain has joined the sales team to cover the the South Midlands area. With many year experience working for Murleys, Martin will be looking to make a flying start in a vibrant construction market.



2005 New Holland E805
8202 hours



1998 Komatsu PC340 Long
Reach – 9440 hours



2013 CAT 286C2
1190 hours



2008 New Holland Kobelco
E215 – 7532 Hours



2008 Bell B30D
8800 hours



2012 Hitachi ZX210LC-3
3117 hours



2013 Kobelco SK85MSR
8655 hours



2013 New Holland Kobelco
E140CSR – 2228 hours



2011 Doosan DX140LC
5510 hours



New & Unused Merlo P25.6



2004 Fiat-Kobelco E135 Long
Reach – 4836 hours



2010 Yanmar B7-5A Sigma
4943 hours



2001 Kobelco SK80MSR
8655 hours



2008 Extec E7



2011 Hyundai R520LC-9
4497 hours



2010 Hyundai R290NLC-7A
5617 hours



2008 Hyundai R250LC-7A
5697 hours



2014 Hyundai R210LC-9
724 hours



2011 Hyundai R210LC-9
5542 hours



2010 Hyundai R210LC-9
7611 hours



2009 Hyundai R210LC-7A
7326 hours



2010 Hyundai R170W-7A
2600 hours



2014 Hyundai R145LCD-9A
893 hours



2013 Hyundai R145LCR-9
1339 hours



2010 Hyundai R145LCR-9
6707 hours



2008 Hyundai R180lc-7A
11,500 hours



2014 Hyundai R80CR-9
872 hours



2011 Hyundai R210LC-9
5679 hours



2011 Hyundai R55-9
2703 hours



2011 Hyundai HL770-9
4699 hours



2012 Hyundai HL760-9
4473 hours

Head office +44 (0) 1179 82 01 23
 Rick Grove – Bristol Office +44 (0) 7887 88 00 55
 Simon Johnson-Taylor – Bristol Office +44 (0) 7976 62 01 41
 Stuart Butler – London 07899 66 45 35
 Luke Mercer – South Wales 07786 33 00 22
 Dominic McCann - South East & South London 07500 33 44 02
www.molsongroup.co.uk info@molsongroup.co.uk

Dan Guibarra – South Coast 07796 77 33 55
 Tom Wilson – South West 07789 93 77 93
 Andrew Wilkinson - Northern 07500 33 44 13
 James Dodkins - Midlands North 07921 14 93 98
 Peter McGuinness - Crushing and Screening 07876 20 11 02
 Martin Brain - Midlands South 07717 44 66 44
 Find us on social media: [Facebook](#) [Twitter](#)